

Product datasheet for **AP53854PU-N**

Septin 8 (SEPT8) (C-term) Rabbit Polyclonal Antibody

Product data:

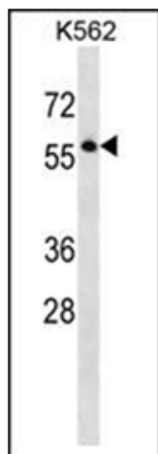
Product Type:	Primary Antibodies
Applications:	WB
Recommended Dilution:	ELISA: 1/1,000. Western blotting: 1/100-1/500.
Reactivity:	Human
Host:	Rabbit
Isotype:	Ig
Clonality:	Polyclonal
Immunogen:	KLH conjugated synthetic peptide between 406-436 amino acids from the C-terminal region of Human SEPT8
Specificity:	Recognizes SEPT8 (C-term).
Formulation:	PBS with 0.09% (W/V) Sodium Azide as preservative State: Aff - Purified State: Liquid purified Ig fraction
Concentration:	lot specific
Purification:	Protein A column followed by peptide Affinity purification
Conjugation:	Unconjugated
Storage:	Store the antibody undiluted at 2-8°C for one month or (in aliquots) at -20°C for longer. Avoid repeated freezing and thawing.
Stability:	Shelf life: one year from despatch.
Gene Name:	septin 8
Database Link:	Entrez Gene 23176 Human Q92599
Background:	SEPT8 is a member of the highly conserved septin family. Septins are 40- to 60-kD GTPases that assemble as filamentous scaffolds. They are involved in the organization of submembranous structures, in neuronal polarity, and in vesicle trafficking (Blaser et al., 2003 [PubMed 12909369]).
Synonyms:	KIAA0202



[View online »](#)

Note: **Molecular Weight:** 55756 Da

Product images:



Western blot analysis of SEPT8 Antibody (C-term) in K562 cell line lysates (35ug/lane). This demonstrates the SEPT8 antibody detected the SEPT8 protein (arrow).