

Product datasheet for **AP53852PU-N**

Septin 2 (SEPT2) (C-term) Rabbit Polyclonal Antibody

Product data:

Product Type:	Primary Antibodies
Applications:	WB
Recommended Dilution:	ELISA: 1/1,000. Western blotting: 1/100-1/500.
Reactivity:	Human
Host:	Rabbit
Isotype:	Ig
Clonality:	Polyclonal
Immunogen:	KLH conjugated synthetic peptide between 279-309 amino acids from the C-terminal region of Human SEPT2
Specificity:	Recognizes SEPT2 (C-term).
Formulation:	PBS with 0.09% (W/V) Sodium Azide as preservative State: Aff - Purified State: Liquid purified Ig fraction
Concentration:	lot specific
Purification:	Protein A column followed by peptide Affinity purification
Conjugation:	Unconjugated
Storage:	Store the antibody undiluted at 2-8°C for one month or (in aliquots) at -20°C for longer. Avoid repeated freezing and thawing.
Stability:	Shelf life: one year from despatch.
Gene Name:	septin 2
Database Link:	Entrez Gene 4735 Human Q15019



[View online »](#)

Background:

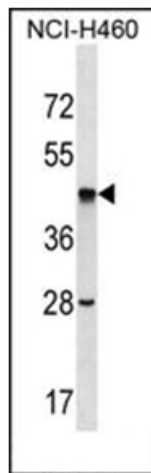
Filament-forming cytoskeletal GTPase. Required for normal organization of the actin cytoskeleton. Plays a role in the biogenesis of polarized columnar-shaped epithelium by maintaining polyglutamylated microtubules, thus facilitating efficient vesicle transport, and by impeding MAP4 binding to tubulin. Required for the progression through mitosis. Forms a scaffold at the midplane of the mitotic spindle required to maintain CENPE localization at kinetochores and consequently chromosome congression. During anaphase, may be required for chromosome segregation and spindle elongation. May play a role in the internalization of 2 intracellular microbial pathogens, *Listeria monocytogenes* and *Shigella flexneri*.

Synonyms:

SEPT2, DIFF6, KIAA0158, NEDD5, NEDD-5, Septin2, SEPT-2

Note:

Molecular Weight: 41487 Da

Product images:

Western blot analysis of SEPT2 Antibody (C-term) in NCI-H460 cell line lysates (35ug/lane). This demonstrates the SEPT2 antibody detected the SEPT2 protein (arrow).