

Product datasheet for **AP53851PU-N**

Septin 11 (SEPT11) (Center) Rabbit Polyclonal Antibody

Product data:

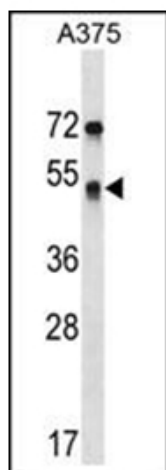
Product Type:	Primary Antibodies
Applications:	WB
Recommended Dilution:	ELISA: 1/1,000. Western blotting: 1/100-1/500.
Reactivity:	Human
Host:	Rabbit
Isotype:	Ig
Clonality:	Polyclonal
Immunogen:	KLH conjugated synthetic peptide between 352-382 amino acids from the Central region of Human SEPT11
Specificity:	Recognizes SEPT11 (Center).
Formulation:	PBS with 0.09% (W/V) Sodium Azide as preservative State: Aff - Purified State: Liquid purified Ig fraction
Concentration:	lot specific
Purification:	Protein A column followed by peptide Affinity purification
Conjugation:	Unconjugated
Storage:	Store the antibody undiluted at 2-8°C for one month or (in aliquots) at -20°C for longer. Avoid repeated freezing and thawing.
Stability:	Shelf life: one year from despatch.
Gene Name:	septin 11
Database Link:	Entrez Gene 55752 Human Q9NVA2
Background:	SEPT11 belongs to the conserved septin family of filament-forming cytoskeletal GTPases that are involved in a variety of cellular functions including cytokinesis and vesicle trafficking (Hanai et al., 2004 [PubMed 15196925]; Nagata et al., 2004 [PubMed 15485874]).
Synonyms:	FLJ10849



[View online »](#)

Note: **Molecular Weight:** 49398 Da

Product images:



Western blot analysis of SEPT11 Antibody (Center) in A375 cell line lysates (35ug/lane). This demonstrates the SEPT11 antibody detected the SEPT11 protein (arrow).