

## Product datasheet for **AP53850PU-N**

### SEPTIN1 (N-term) Rabbit Polyclonal Antibody

#### Product data:

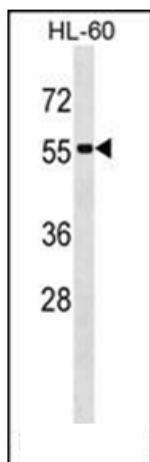
Product Type:	Primary Antibodies
Applications:	WB
Recommended Dilution:	ELISA: 1/1,000. Western blotting: 1/100-1/500.
Reactivity:	Human
Host:	Rabbit
Isotype:	Ig
Clonality:	Polyclonal
Immunogen:	KLH conjugated synthetic peptide between 53-82 amino acids from the N-terminal region of Human SEPT1
Specificity:	Recognizes SEPT1 (N-term).
Formulation:	PBS with 0.09% (W/V) Sodium Azide as preservative State: Aff - Purified State: Liquid purified Ig fraction
Concentration:	lot specific
Purification:	Protein A column followed by peptide Affinity purification
Conjugation:	Unconjugated
Storage:	Store the antibody undiluted at 2-8°C for one month or (in aliquots) at -20°C for longer. Avoid repeated freezing and thawing.
Stability:	Shelf life: one year from despatch.
Gene Name:	septin 1
Database Link:	<a href="#">Entrez Gene 1731 Human Q8WYJ6</a>
Background:	This gene is a member of the septin family of GTPases. Members of this family are required for cytokinesis. This gene encodes a protein associated with the tau-based paired helical filament core, and may contribute to the formation of neurofibrillary tangles in Alzheimer's disease. [provided by RefSeq].
Synonyms:	LARP, Peanut-like protein 3, PNUTL3, DIFF6, NY-BR-24



[View online »](#)

Note: **Molecular Weight:** 41971 Da

**Product images:**



western blot analysis of SEPT1 Antibody (N-term) in HL-60 cell line lysates (35ug/lane). This demonstrates the SEPT1 antibody detected the SEPT1 protein (arrow).