

Product datasheet for **AP53849PU-N**

SEPN1 (SELENON) (C-term) Rabbit Polyclonal Antibody

Product data:

| | |
|-----------------------|---|
| Product Type: | Primary Antibodies |
| Applications: | IHC, WB |
| Recommended Dilution: | ELISA: 1/1,000. Western blotting: 1/100-1/500. Immunohistochemistry: 1/50-1/100. |
| Reactivity: | Human |
| Host: | Rabbit |
| Isotype: | Ig |
| Clonality: | Polyclonal |
| Immunogen: | KLH conjugated synthetic peptide between 416-445 amino acids from the C-terminal region of Human SEPN1 |
| Specificity: | Recognizes SEPN1 (C-term). |
| Formulation: | PBS with 0.09% (W/V) Sodium Azide as preservative State: Aff - Purified State: Liquid purified Ig fraction |
| Concentration: | lot specific |
| Purification: | Protein A column followed by peptide Affinity purification |
| Conjugation: | Unconjugated |
| Storage: | Store the antibody undiluted at 2-8°C for one month or (in aliquots) at -20°C for longer. Avoid repeated freezing and thawing. |
| Stability: | Shelf life: one year from despatch. |
| Gene Name: | selenoprotein N, 1 |
| Database Link: | Entrez Gene 57190 Human Q9NZV5 |



[View online »](#)

Background:

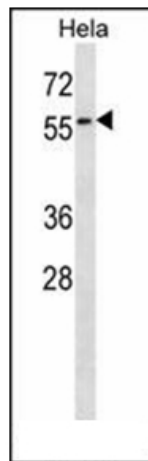
This gene encodes a selenoprotein, which contains a selenocysteine (Sec) residue at its active site. The selenocysteine is encoded by the UGA codon that normally signals translation termination. The 3' UTR of selenoprotein genes have a common stem-loop structure, the sec insertion sequence (SECIS), that is necessary for the recognition of UGA as a Sec codon rather than as a stop signal. Mutations in this gene cause the classical phenotype of multimimicore disease and congenital muscular dystrophy with spinal rigidity and restrictive respiratory syndrome. Two alternatively spliced transcript variants encoding distinct isoforms have been found for this gene.

Synonyms:

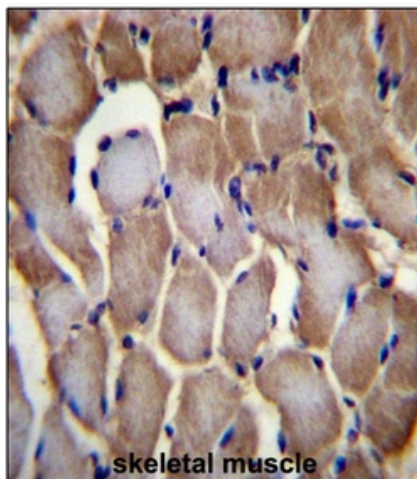
SELN

Note:**Molecular Weight:** 65827 Da**Protein Families:**

Druggable Genome

Product images:

Western blot analysis of SEPN1 Antibody (C-term) in HeLa cell line lysates (35ug/lane). This demonstrates the SEPN1 antibody detected the SEPN1 protein (arrow).



Immunohistochemistry analysis in Formalin Fixed, Paraffin Embedded Human skeletal muscle tissue stained with SEPN1 antibody (C-term) followed by peroxidase conjugation of the secondary antibody and DAB staining. This data demonstrates the use of SEPN1 Antibody (C-term) for immunohistochemistry. Clinical relevance has not been evaluated.