

Product datasheet for **AP53847PU-N**

SEMA4C (C-term) Rabbit Polyclonal Antibody

Product data:

Product Type:	Primary Antibodies
Applications:	WB
Recommended Dilution:	ELISA: 1/1,000. Western blotting: 1/100-1/500.
Reactivity:	Human
Host:	Rabbit
Isotype:	Ig
Clonality:	Polyclonal
Immunogen:	KLH conjugated synthetic peptide between 791-821 amino acids from the C-terminal region of Human SEMA4C
Specificity:	Recognizes SEMA4C (C-term).
Formulation:	PBS with 0.09% (W/V) Sodium Azide as preservative State: Aff - Purified State: Liquid purified Ig fraction
Concentration:	lot specific
Purification:	Protein A column followed by peptide Affinity purification
Conjugation:	Unconjugated
Storage:	Store the antibody undiluted at 2-8°C for one month or (in aliquots) at -20°C for longer. Avoid repeated freezing and thawing.
Stability:	Shelf life: one year from despatch.
Gene Name:	semaphorin 4C
Database Link:	Entrez Gene 54910 Human Q9C0C4
Background:	Probable signaling receptor which may play a role in myogenic differentiation through activation of the stress-activated MAPK cascade.
Synonyms:	Semaphorin-4C, SEMAI, KIAA1739
Note:	Molecular Weight: 92623 Da

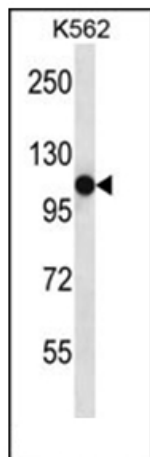


[View online »](#)

Protein Families: Transmembrane

Protein Pathways: Axon guidance

Product images:



Western blot analysis of SEMA4C Antibody (C-term) in K562 cell line lysates (35ug/lane). This demonstrates the SEMA4C antibody detected the SEMA4C protein (arrow).