

Product datasheet for **AP53846PU-N**

SEMA4A (N-term) Rabbit Polyclonal Antibody

Product data:

Product Type:	Primary Antibodies
Applications:	WB
Recommended Dilution:	ELISA: 1/1,000. Western blotting: 1/100-1/500.
Reactivity:	Human, Mouse
Host:	Rabbit
Isotype:	Ig
Clonality:	Polyclonal
Immunogen:	KLH conjugated synthetic peptide between 150-180 amino acids from the N-terminal region of Human SEMA4A
Specificity:	Recognizes SEMA4A (N-term).
Formulation:	PBS with 0.09% (W/V) Sodium Azide as preservative State: Aff - Purified State: Liquid purified Ig fraction
Concentration:	lot specific
Purification:	Protein A column followed by peptide Affinity purification
Conjugation:	Unconjugated
Storage:	Store the antibody undiluted at 2-8°C for one month or (in aliquots) at -20°C for longer. Avoid repeated freezing and thawing.
Stability:	Shelf life: one year from despatch.
Gene Name:	semaphorin 4A
Database Link:	Entrez Gene 20351 Mouse Entrez Gene 64218 Human Q9H3S1



[View online »](#)

Background:

This gene encodes a member of the semaphorin family of soluble and transmembrane proteins. Semaphorins are involved in numerous functions, including axon guidance, morphogenesis, carcinogenesis, and immunomodulation. The encoded protein is a single-pass type I membrane protein containing an immunoglobulin-like C2-type domain, a PSI domain and a sema domain. It inhibits axonal extension by providing local signals to specify territories inaccessible for growing axons. It is an activator of T-cell-mediated immunity and suppresses vascular endothelial growth factor (VEGF)-mediated endothelial cell migration and proliferation in vitro and angiogenesis in vivo. Mutations in this gene are associated with retinal degenerative diseases including retinitis pigmentosa type 35 (RP35) and cone-rod dystrophy type 10 (CORD10). Multiple alternatively spliced transcript variants encoding different isoforms have been identified.

Synonyms:

Semaphorin-4A, Semaphorin-B, Sema B, SEMAB, SEMB

Note:

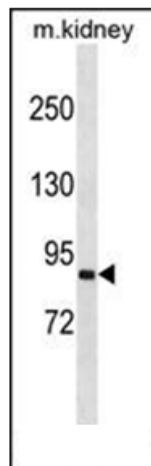
Molecular Weight: 83574 Da

Protein Families:

Transmembrane

Protein Pathways:

Axon guidance

Product images:

Western blot analysis of SEMA4A Antibody (N-term) in Mouse kidney tissue lysates (35ug/lane). This demonstrates the SEMA4A antibody detected the SEMA4A protein (arrow).