

Product datasheet for **AP53845PU-N**

SEMA3G (Center) Rabbit Polyclonal Antibody

Product data:

Product Type:	Primary Antibodies
Applications:	IHC, WB
Recommended Dilution:	ELISA: 1/1,000. Western blotting: 1/1000. Immunohistochemistry: 1/50-1/100.
Reactivity:	Human
Host:	Rabbit
Isotype:	Ig
Clonality:	Polyclonal
Immunogen:	KLH conjugated synthetic peptide between 216-244 amino acids from the Central region of Human SEMA3G
Specificity:	Recognizes SEMA3G (Center).
Formulation:	PBS with 0.09% (W/V) Sodium Azide as preservative State: Aff - Purified State: Liquid purified Ig fraction
Concentration:	lot specific
Purification:	Protein A column followed by peptide Affinity purification
Conjugation:	Unconjugated
Storage:	Store the antibody undiluted at 2-8°C for one month or (in aliquots) at -20°C for longer. Avoid repeated freezing and thawing.
Stability:	Shelf life: one year from despatch.
Gene Name:	semaphorin 3G
Database Link:	Entrez Gene 56920 Human Q9NS98
Background:	SEMA3G has chemorepulsive activities for sympathetic axons. Ligand of NRP2 (By similarity).
Synonyms:	Semaphorin-3G, Semaphorin sem2
Note:	Molecular Weight: 86701 Da

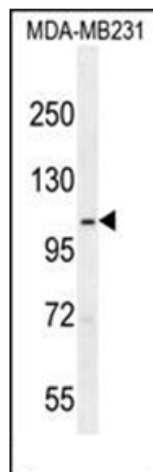


[View online »](#)

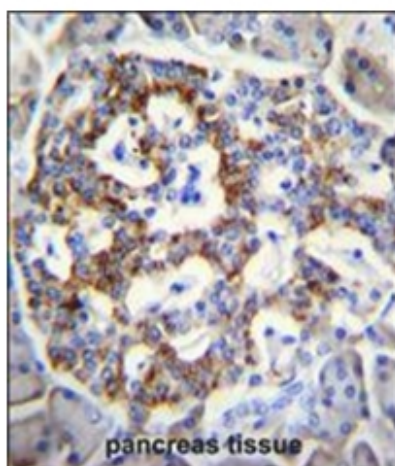
Protein Families: Druggable Genome, Secreted Protein

Protein Pathways: Axon guidance

Product images:



Western blot analysis of SEMA3G Antibody (Center) in MDA-MB231 cell line lysates (35ug/lane). This demonstrates the SEMA3G antibody detected the SEMA3G protein (arrow).



Immunohistochemistry analysis in Formalin Fixed, Paraffin Embedded Human pancreas tissue stained with SEMA3G antibody (Center) followed by peroxidase conjugation of the secondary antibody and DAB staining. This data demonstrates the use of SEMA3G Antibody (Center) for immunohistochemistry. Clinical relevance has not been evaluated.