

## Product datasheet for **AP53844PU-N**

### Semaphorin 3D (SEMA3D) (C-term) Rabbit Polyclonal Antibody

#### Product data:

Product Type:	Primary Antibodies
Applications:	WB
Recommended Dilution:	ELISA: 1/1,000. Western blotting: 1/100-1/500.
Reactivity:	Human
Host:	Rabbit
Isotype:	Ig
Clonality:	Polyclonal
Immunogen:	KLH conjugated synthetic peptide between 610-640 amino acids from the C-terminal region of Human SEMA3D
Specificity:	Recognizes SEMA3D (C-term).
Formulation:	PBS with 0.09% (W/V) Sodium Azide as preservative State: Aff - Purified State: Liquid purified Ig fraction
Concentration:	lot specific
Purification:	Protein A column followed by peptide Affinity purification
Conjugation:	Unconjugated
Storage:	Store the antibody undiluted at 2-8°C for one month or (in aliquots) at -20°C for longer. Avoid repeated freezing and thawing.
Stability:	Shelf life: one year from despatch.
Gene Name:	semaphorin 3D
Database Link:	<a href="#">Entrez Gene 223117 Human O95025</a>
Background:	Induces the collapse and paralysis of neuronal growth cones. Could potentially act as repulsive cues toward specific neuronal populations. Binds to neuropilin (By similarity).
Synonyms:	Semaphorin-3D
Note:	<b>Molecular Weight:</b> 89651 Da

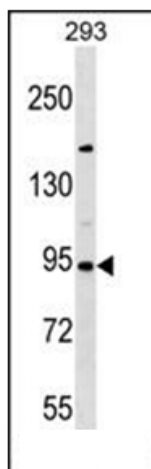


[View online »](#)

Protein Families: Transmembrane

Protein Pathways: Axon guidance

### Product images:



Western blot analysis of SEMA3D Antibody (C-term) in 293 cell line lysates (35ug/lane). This demonstrates the SEMA3D antibody detected the SEMA3D protein (arrow).