

Product datasheet for **AP53843PU-N**

SELV (SELENOV) (C-term) Rabbit Polyclonal Antibody

Product data:

Product Type:	Primary Antibodies
Applications:	FC, IF, IHC, WB
Recommended Dilution:	ELISA: 1/1,000. Western blotting: 1/1000. Immunohistochemistry: 1/50-1/100. Flow Cytometry: 1/10-1/50. Immunofluorescence: 1/10-1/50.
Reactivity:	Human
Host:	Rabbit
Isotype:	Ig
Clonality:	Polyclonal
Immunogen:	KLH conjugated synthetic peptide between 296-324 amino acids from the C-terminal region of Human SELV
Specificity:	Recognizes SELV (C-term).
Formulation:	PBS with 0.09% (W/V) Sodium Azide as preservative State: Aff - Purified State: Liquid purified Ig fraction
Concentration:	lot specific
Purification:	Protein A column followed by peptide Affinity purification
Conjugation:	Unconjugated
Storage:	Store the antibody undiluted at 2-8°C for one month or (in aliquots) at -20°C for longer. Avoid repeated freezing and thawing.
Stability:	Shelf life: one year from despatch.
Gene Name:	selenoprotein V
Database Link:	Entrez Gene 348303 Human P59797



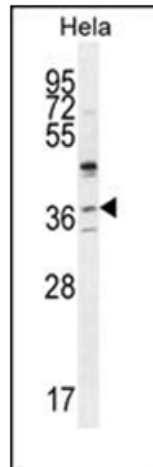
[View online »](#)

Background:

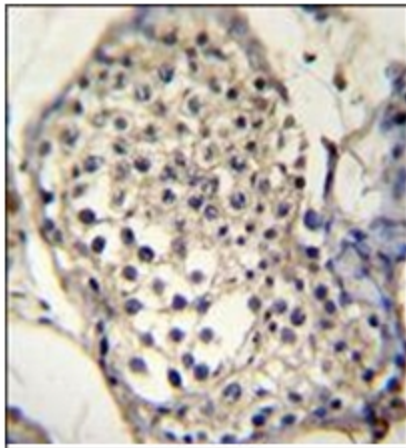
This gene encodes a selenoprotein, which contains a selenocysteine (Sec) residue at its active site. The selenocysteine is encoded by the UGA codon that normally signals translation termination. The 3' UTR of selenoprotein genes have a common stem-loop structure, the sec insertion sequence (SECIS), that is necessary for the recognition of UGA as a Sec codon rather than as a stop signal.

Synonyms:

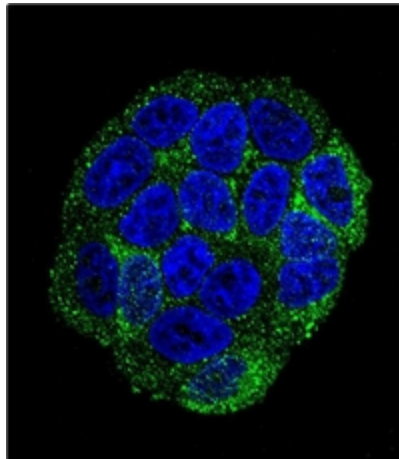
SELV

Note:**Molecular Weight:** 36800 Da**Product images:**

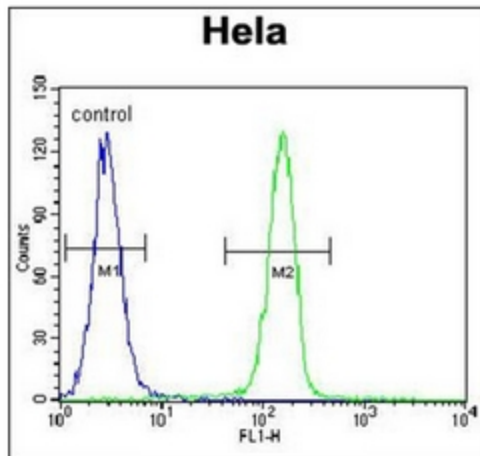
Western blot analysis of SELV Antibody (C-term) in HeLa cell line lysates (35ug/lane). This demonstrates the SELV antibody detected the SELV protein (arrow).



Immunohistochemistry analysis in Formalin Fixed, Paraffin Embedded Human testis tissue stained with SELV antibody (C-term) followed by peroxidase conjugation of the secondary antibody and DAB staining. This data demonstrates the use of SELV Antibody (C-term) for immunohistochemistry. Clinical relevance has not been evaluated.



Confocal Immunofluorescent analysis of SELV Antibody (C-term) with HeLa cell followed by Alexa Fluor 488-conjugated Goat anti-Rabbit IgG (green). DAPI was used to stain the cell nuclear (blue).



Flow Cytometric analysis of HeLa cells using SELV Antibody (C-term) (Right histogram) compared to a negative control cell (Left histogram). FITC-conjugated Goat-anti-Rabbit secondary antibodies were used for the analysis.