

Product datasheet for **AP53840PU-N**

CD162 (SELPLG) (C-term) Rabbit Polyclonal Antibody

Product data:

Product Type:	Primary Antibodies
Applications:	FC, WB
Recommended Dilution:	ELISA: 1/1,000. Western blotting: 1/100-1/500. Flow Cytometry: 1/10-1/50.
Reactivity:	Human
Host:	Rabbit
Isotype:	Ig
Clonality:	Polyclonal
Immunogen:	KLH conjugated synthetic peptide between 386-413 amino acids from the C-terminal region of Human SELPLG
Specificity:	Recognizes SELPLG (C-term).
Formulation:	PBS with 0.09% (W/V) Sodium Azide as preservative State: Aff - Purified State: Liquid purified Ig fraction
Concentration:	lot specific
Purification:	Protein A column followed by peptide Affinity purification
Conjugation:	Unconjugated
Storage:	Store the antibody undiluted at 2-8°C for one month or (in aliquots) at -20°C for longer. Avoid repeated freezing and thawing.
Stability:	Shelf life: one year from despatch.
Gene Name:	selectin P ligand
Database Link:	Entrez Gene 6404 Human Q14242



[View online »](#)

Background:

SELPLG is the high affinity counter-receptor for P-selectin on myeloid cells and stimulated T lymphocytes. As such, it plays a critical role in the tethering of these cells to activated platelets or endothelia expressing P-selectin. The organization of the SELPG gene closely resembles that of CD43 and the human platelet glycoprotein Gplb-alpha both of which have an intron in the 5-prime-noncoding region, a long second exon containing the complete coding region, and TATA-less promoters.

Synonyms:

PSGL-1, Selectin P ligand, SELPLG

Note:

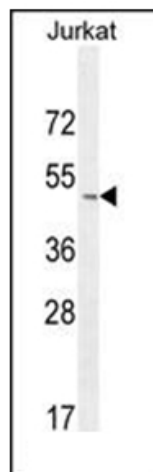
Molecular Weight: 43201 Da

Protein Families:

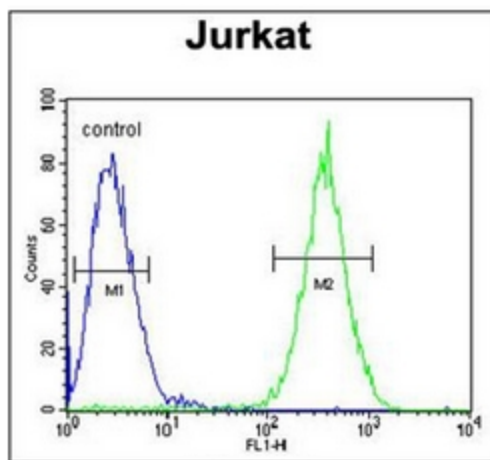
Druggable Genome, Transmembrane

Protein Pathways:

Cell adhesion molecules (CAMs)

Product images:


Western blot analysis of SELPLG Antibody (C-term) in Jurkat cell line lysates (35ug/lane). This demonstrates the SELPLG antibody detected the SELPLG protein (arrow).



flow cytometric analysis of Jurkat cells using SELPLG Antibody (C-term) (Right histogram) compared to a negative control cell (Left histogram). FITC-conjugated Goat-anti-Rabbit secondary antibodies were used for the analysis.