

Product datasheet for **AP53838PU-N**

SEL1L (N-term) Rabbit Polyclonal Antibody

Product data:

Product Type:	Primary Antibodies
Applications:	WB
Recommended Dilution:	ELISA: 1/1,000. Western blotting: 1/100-1/500.
Reactivity:	Human
Host:	Rabbit
Isotype:	Ig
Clonality:	Polyclonal
Immunogen:	KLH conjugated synthetic peptide between 82-112 amino acids from the N-terminal region of Human SEL1L
Specificity:	Recognizes SEL1L Antibody (N-term).
Formulation:	PBS with 0.09% (W/V) Sodium Azide as preservative State: Aff - Purified State: Liquid purified Ig fraction
Concentration:	lot specific
Purification:	Protein A column followed by peptide Affinity purification
Conjugation:	Unconjugated
Storage:	Store the antibody undiluted at 2-8°C for one month or (in aliquots) at -20°C for longer. Avoid repeated freezing and thawing.
Stability:	Shelf life: one year from despatch.
Gene Name:	SEL1L ERAD E3 ligase adaptor subunit
Database Link:	Entrez Gene 6400 Human Q9UBV2
Background:	SEL1L may play a role in Notch signaling (By similarity). May be involved in the endoplasmic reticulum quality control (ERQC) system also called ER-associated degradation (ERAD) involved in ubiquitin-dependent degradation of misfolded endoplasmic reticulum proteins.
Synonyms:	Sel-1L, Protein sel-1 homolog 1, TSA305

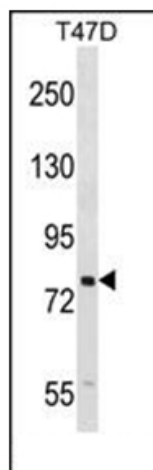


[View online »](#)

Note: **Molecular Weight:** 88755 Da

Protein Families: Druggable Genome, Transmembrane

Product images:



Western blot analysis of SEL1L Antibody (N-term) in T47D cell line lysates (35ug/lane). This demonstrates the SEL1L antibody detected the SEL1L protein (arrow).