

Product datasheet for **AP53837PU-N**

SEL1L (Center) Rabbit Polyclonal Antibody

Product data:

| | |
|-----------------------|--|
| Product Type: | Primary Antibodies |
| Applications: | FC, IHC, WB |
| Recommended Dilution: | ELISA: 1/1,000. Western blotting: 1/100-1/500. Flow Cytometry: 1/10-1/50. |
| Reactivity: | Human |
| Host: | Rabbit |
| Isotype: | Ig |
| Clonality: | Polyclonal |
| Immunogen: | KLH conjugated synthetic peptide between 159-186 amino acids from the Central region of Human SEL1L |
| Specificity: | Recognizes SEL1L (Center). |
| Formulation: | PBS with 0.09% (W/V) Sodium Azide as preservative State: Aff - Purified State: Liquid purified Ig fraction |
| Concentration: | lot specific |
| Purification: | Protein A column followed by peptide Affinity purification |
| Conjugation: | Unconjugated |
| Storage: | Store the antibody undiluted at 2-8°C for one month or (in aliquots) at -20°C for longer. Avoid repeated freezing and thawing. |
| Stability: | Shelf life: one year from despatch. |
| Gene Name: | SEL1L ERAD E3 ligase adaptor subunit |
| Database Link: | Entrez Gene 6400 Human Q9UBV2 |
| Background: | May play a role in Notch signaling (By similarity). May be involved in the endoplasmic reticulum quality control (ERQC) system also called ER-associated degradation (ERAD) involved in ubiquitin-dependent degradation of misfolded endoplasmic reticulum proteins. |
| Synonyms: | Sel-1L, Protein sel-1 homolog 1, TSA305 |

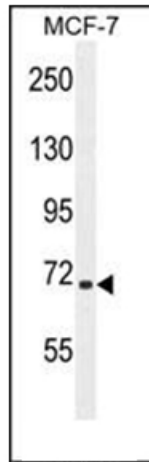


[View online »](#)

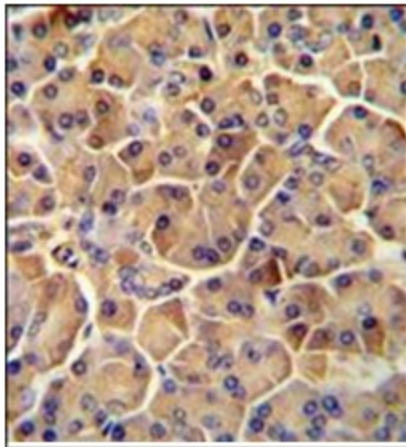
Note: **Molecular Weight:** 88755 Da

Protein Families: Druggable Genome, Transmembrane

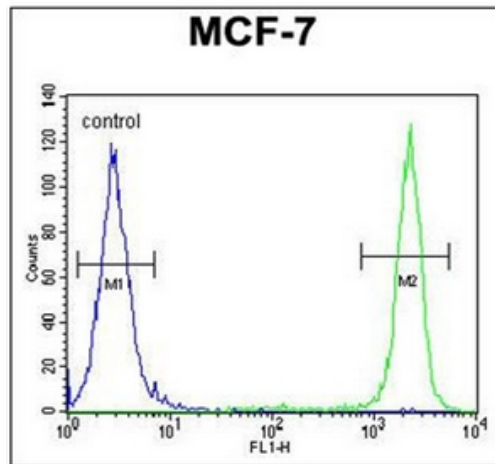
Product images:



Western blot analysis of SEL1L Antibody (Center) in MCF-7 cell line lysates (35ug/lane). This demonstrates the SEL1L antibody detected the SEL1L protein (arrow).



Immunohistochemistry analysis in Formalin Fixed, Paraffin Embedded Human pancreas tissue stained with SEL1L antibody (Center) followed by peroxidase conjugation of the secondary antibody and DAB staining. This data demonstrates the use of the SEL1L antibody (Center) for immunohistochemistry. Clinical relevance has not been evaluated.



Flow cytometric analysis of MCF-7 cells using SEL1L Antibody (Center) (Right histogram) compared to a negative control cell (Left histogram). FITC-conjugated Goat-anti-Rabbit secondary antibodies were used for the analysis.