

## Product datasheet for **AP53835PU-N**

### SECISBP2 (Center) Rabbit Polyclonal Antibody

#### Product data:

Product Type:	Primary Antibodies
Applications:	WB
Recommended Dilution:	ELISA: 1/1,000. Western blotting: 1/100-1/500.
Reactivity:	Human
Host:	Rabbit
Isotype:	Ig
Clonality:	Polyclonal
Immunogen:	KLH conjugated synthetic peptide between 500-530 amino acids from the Central region of Human SECISBP2
Specificity:	Recognizes SECISBP2 (Center).
Formulation:	PBS with 0.09% (W/V) Sodium Azide as preservative State: Aff - Purified State: Liquid purified Ig fraction
Concentration:	lot specific
Purification:	Protein A column followed by peptide Affinity purification
Conjugation:	Unconjugated
Storage:	Store the antibody undiluted at 2-8°C for one month or (in aliquots) at -20°C for longer. Avoid repeated freezing and thawing.
Stability:	Shelf life: one year from despatch.
Gene Name:	SECIS binding protein 2
Database Link:	<a href="#">Entrez Gene 79048 Human</a> <a href="#">Q96T21</a>



[View online »](#)

**Background:**

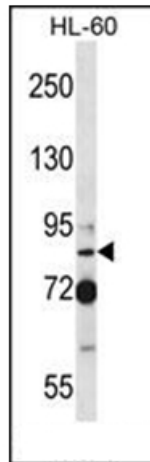
The incorporation of selenocysteine into a protein requires the concerted action of an mRNA element called a sec insertion sequence (SECIS), a selenocysteine-specific translation elongation factor and a SECIS binding protein. With these elements in place, a UGA codon can be decoded as selenocysteine. The gene described in this record encodes a nuclear protein that functions as a SECIS binding protein. Mutations in this gene have been associated with a reduction in activity of a specific thyroxine deiodinase, a selenocysteine-containing enzyme, and abnormal thyroid hormone metabolism.

**Synonyms:**

SECIS-binding protein 2, SBP2

**Note:**

**Molecular Weight:** 95462 Da

**Product images:**

western blot analysis of SECISBP2 Antibody (Center) in HL-60 cell line lysates (35ug/lane). This demonstrates the SECISBP2 antibody detected the SECISBP2 protein (arrow).