

Product datasheet for **AP53833PU-N**

SEC61B (Center) Rabbit Polyclonal Antibody

Product data:

Product Type:	Primary Antibodies
Applications:	WB
Recommended Dilution:	ELISA: 1/1,000. Western blotting: 1/100-1/500.
Reactivity:	Human, Mouse
Host:	Rabbit
Isotype:	Ig
Clonality:	Polyclonal
Immunogen:	KLH conjugated synthetic peptide between 41-70 amino acids from the Central region of Human SEC61B (NP_006799.1)
Specificity:	Recognizes SEC61B (Center).
Formulation:	PBS with 0.09% (W/V) Sodium Azide as preservative State: Aff - Purified State: Liquid purified Ig fraction
Concentration:	lot specific
Purification:	Protein A column followed by peptide Affinity purification
Conjugation:	Unconjugated
Storage:	Store the antibody undiluted at 2-8°C for one month or (in aliquots) at -20°C for longer. Avoid repeated freezing and thawing.
Stability:	Shelf life: one year from despatch.
Gene Name:	Sec61 translocon beta subunit
Database Link:	Entrez Gene 10952 Human P60468



[View online »](#)

Background:

The Sec61 complex is the central component of the protein translocation apparatus of the endoplasmic reticulum (ER) membrane. Oligomers of the Sec61 complex form a transmembrane channel where proteins are translocated across and integrated into the ER membrane. This complex consists of three membrane proteins- alpha, beta, and gamma. This gene encodes the beta-subunit protein. The Sec61 subunits are also observed in the post-ER compartment, suggesting that these proteins can escape the ER and recycle back. There is evidence for multiple polyadenylated sites for this transcript.

Synonyms:

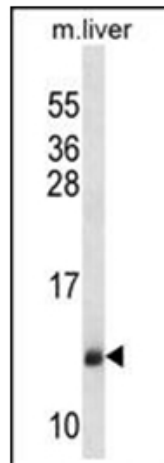
SEC61B

Note:**Molecular Weight:** 9974 Da**Protein Families:**

Transmembrane

Protein Pathways:

Vibrio cholerae infection

Product images:

Western blot analysis of SEC61B Antibody (Center) in Mouse liver tissue lysates (35ug/lane). This demonstrates the SEC61B antibody detected the SEC61B protein (arrow).