

Product datasheet for **AP53832PU-N**

SEC14L5 (Center) Rabbit Polyclonal Antibody

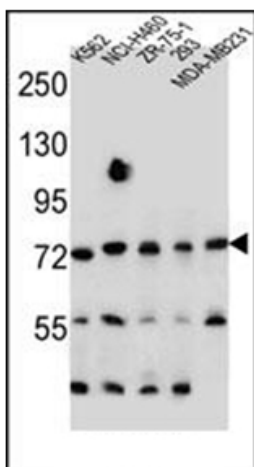
Product data:

Product Type:	Primary Antibodies
Applications:	IHC, WB
Recommended Dilution:	ELISA: 1/1,000. Western blotting: 1/100-1/500. Immunohistochemistry: 1/10-1/50.
Reactivity:	Human
Host:	Rabbit
Isotype:	Ig
Clonality:	Polyclonal
Immunogen:	KLH conjugated synthetic peptide between 455-485 amino acids from the Central region of Human SEC14L5
Specificity:	Recognizes SEC14L5 (Center).
Formulation:	PBS with 0.09% (W/V) Sodium Azide as preservative State: Aff - Purified State: Liquid purified Ig fraction
Concentration:	lot specific
Purification:	Protein A column followed by peptide Affinity purification
Conjugation:	Unconjugated
Storage:	Store the antibody undiluted at 2-8°C for one month or (in aliquots) at -20°C for longer. Avoid repeated freezing and thawing.
Stability:	Shelf life: one year from despatch.
Gene Name:	SEC14 like lipid binding 5
Database Link:	Entrez Gene 9717 Human O43304
Background:	The specific function of the protein remains unknown.
Synonyms:	SEC14-like protein 5, KIAA0420
Note:	Molecular Weight: 78942 Da

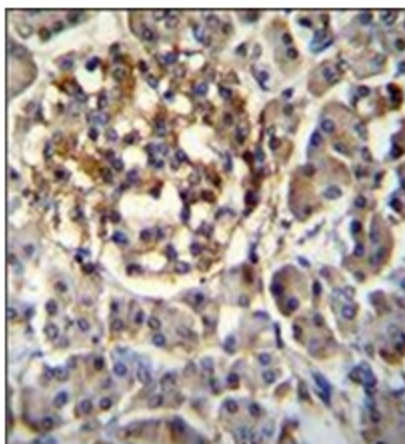


[View online »](#)

Product images:



Western blot analysis of SEC14L5 Antibody (Center) in K562, NCI-H460, ZR-75-1, 293, MDA-MB231 cell line lysates (35ug/lane). This demonstrates the SEC14L5 antibody detected the SEC14L5 protein (arrow).



Immunohistochemistry analysis in Formalin Fixed, Paraffin Embedded Human pancreas tissue stained with SEC14L5 antibody (Center) followed by peroxidase conjugation of the secondary antibody and DAB staining. This data demonstrates the use of SEC14L5 Antibody (Center) for immunohistochemistry. Clinical relevance has not been evaluated.