

Product datasheet for **AP53831PU-N**

SEC14 like protein 2 (SEC14L2) (N-term) Rabbit Polyclonal Antibody

Product data:

Product Type:	Primary Antibodies
Applications:	WB
Recommended Dilution:	Western blotting: 1/1000.
Reactivity:	Bovine, Mouse, Rabbit, Rat
Host:	Rabbit
Isotype:	Ig
Clonality:	Polyclonal
Immunogen:	KLH conjugated synthetic peptide between 41-69 amino acids from the N-terminal region of Human SEC14L2
Specificity:	Recognizes SEC14L2 (N-term).
Formulation:	PBS with 0.09% (W/V) Sodium Azide as preservative State: Aff - Purified State: Liquid purified Ig fraction
Concentration:	lot specific
Purification:	Protein A column followed by peptide Affinity purification
Conjugation:	Unconjugated
Storage:	Store the antibody undiluted at 2-8°C for one month or (in aliquots) at -20°C for longer. Avoid repeated freezing and thawing.
Stability:	Shelf life: one year from despatch.
Gene Name:	SEC14 like lipid binding 2
Database Link:	Entrez Gene 67815 Mouse O76054
Background:	This gene encodes a cytosolic protein which belongs to a family of lipid-binding proteins including Sec14p, alpha-tocopherol transfer protein, and cellular retinol-binding protein. The encoded protein stimulates squalene monooxygenase which is a downstream enzyme in the cholesterol biosynthetic pathway. Alternatively spliced transcript variants encoding different isoforms have been identified for this gene.



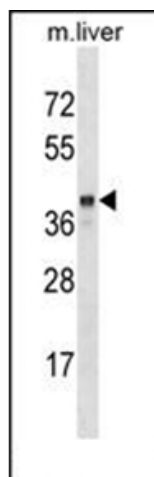
[View online »](#)

Synonyms: SEC14-like protein 2, Alpha-tocopherol-associated protein, TAP, SPF, C22orf6, KIAA1186, KIAA1658

Note: **Molecular Weight:** 46145 Da

Protein Families: Transcription Factors

Product images:



Western blot analysis of SEC14L2 Antibody (N-term) in Mouse liver tissue lysates (35ug/lane). This demonstrates the SEC14L2 antibody detected the SEC14L2 protein (arrow).