

Product datasheet for **AP53825PU-N**

RDHE2 (SDR16C5) (Center) Rabbit Polyclonal Antibody

Product data:

Product Type:	Primary Antibodies
Applications:	WB
Recommended Dilution:	ELISA: 1/1,000. Western blotting: 1/100-1/500.
Reactivity:	Human
Host:	Rabbit
Isotype:	Ig
Clonality:	Polyclonal
Immunogen:	KLH conjugated synthetic peptide between 122-151 amino acids from the Central region of Human SDR16C5.
Specificity:	Recognizes SDR16C5 (Center).
Formulation:	PBS with 0.09% (W/V) Sodium Azide as preservative State: Aff - Purified State: Liquid purified Ig fraction
Concentration:	lot specific
Purification:	Protein A column followed by peptide Affinity purification
Conjugation:	Unconjugated
Storage:	Store the antibody undiluted at 2-8°C for one month or (in aliquots) at -20°C for longer. Avoid repeated freezing and thawing.
Stability:	Shelf life: one year from despatch.
Gene Name:	short chain dehydrogenase/reductase family 16C, member 5
Database Link:	Entrez Gene 195814 Human Q8N3Y7
Background:	RDHE2 belongs to a family of short-chain alcohol dehydrogenases/reductases that catalyze the first and rate-limiting step that generates retinaldehyde from retinol (Matsuzaka et al., 2002 [PubMed 12372410]).
Synonyms:	Epidermal retinol dehydrogenase 2, RDH-E2, EPHD-2, retSDR2

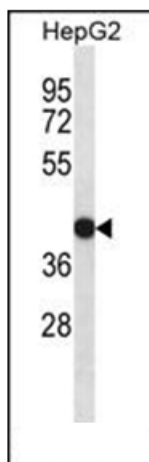


[View online »](#)

Note: **Molecular Weight:** 34095 Da

Protein Families: Druggable Genome

Product images:



Western blot analysis of SDR16C5 Antibody (Center) in HepG2 cell line lysates (35ug/lane). This demonstrates the SDR16C5 antibody detected the SDR16C5 protein (arrow).