

Product datasheet for **AP53824PU-N**

CAVIN2 (Center) Rabbit Polyclonal Antibody

Product data:

Product Type:	Primary Antibodies
Applications:	FC, IHC, WB
Recommended Dilution:	ELISA: 1/1,000. Western blotting: 1/100-1/500. Flow Cytometry: 1/10-1/50. Immunohistochemistry: 1/50-1/100.
Reactivity:	Hamster, Human
Host:	Rabbit
Isotype:	Ig
Clonality:	Polyclonal
Immunogen:	KLH conjugated synthetic peptide between 115~145 amino acids from the Central region of Human SDR.
Specificity:	Recognizes SDR (Center).
Formulation:	PBS with 0.09% (W/V) Sodium Azide as preservative State: Purified State: Liquid purified Ig fraction
Concentration:	lot specific
Purification:	Protein A column followed by peptide Affinity purification
Conjugation:	Unconjugated
Storage:	Store the antibody undiluted at 2-8°C for one month or (in aliquots) at -20°C for longer. Avoid repeated freezing and thawing.
Stability:	Shelf life: one year from despatch.
Gene Name:	serum deprivation response
Database Link:	Entrez Gene 8436 Human O95810



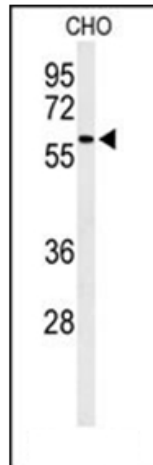
[View online »](#)

Background: This gene encodes a calcium-independent phospholipid-binding protein whose expression increases in serum-starved cells. This protein is a substrate for protein kinase C (PKC) phosphorylation and recruits polymerase I and transcript release factor (PTRF) to caveolae. Removal of this protein causes caveolae loss and its over-expression results in caveolae deformation and membrane tubulation.

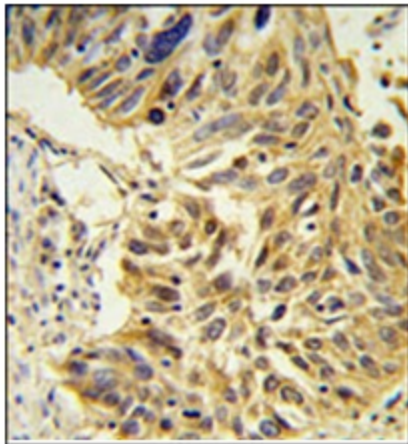
Synonyms: Serum deprivation-response protein, Cavin-2, PS-p68, Phosphatidylserine-binding protein

Note: **Molecular Weight:** 47173 Da

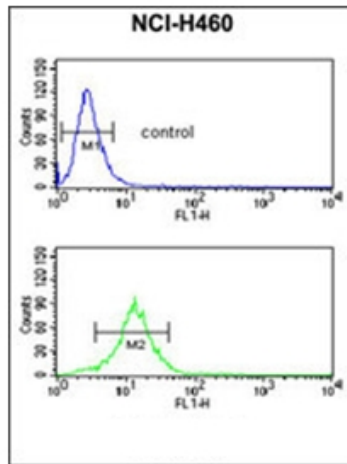
Product images:



Western blot analysis of SDR Antibody (Center) in CHO cell line lysates (35 ug/lane). SDR (arrow) was detected using the purified Pab.



Immunohistochemistry analysis in Formalin Fixed, Paraffin Embedded lung carcinoma stained with SDR Antibody (Center) followed by peroxidase conjugation of the secondary antibody and DAB staining. This data demonstrates the use of the SDR Antibody (Center) for immunohistochemistry. Clinical relevance has not been evaluated.



Flow Cytometric analysis of NCI-H460 cells using SDR Antibody (Center) (Bottom histogram) compared to a negative control cell (Top histogram). FITC-conjugated Goat-anti-Rabbit secondary antibodies were used for the analysis.