

Product datasheet for **AP53823PU-N**

SDHD (N-term) Rabbit Polyclonal Antibody

Product data:

Product Type:	Primary Antibodies
Applications:	FC, IF, IHC, WB
Recommended Dilution:	ELISA: 1/1,000. Western blotting: 1/100-1/500. Immunofluorescence: 1/10-1/50. Immunohistochemistry: 1/10-1/50. Flow Cytometry: 1/10-1/50.
Reactivity:	Human
Host:	Rabbit
Isotype:	Ig
Clonality:	Polyclonal
Immunogen:	KLH conjugated synthetic peptide between 20-50 amino acids from the N-terminal region of Human SDHD (NP_002993.1)
Specificity:	Recognizes SDHD (N-term).
Formulation:	PBS with 0.09% (W/V) Sodium Azide as preservative State: Aff - Purified State: Liquid purified Ig fraction
Concentration:	lot specific
Purification:	Protein A column followed by peptide Affinity purification
Conjugation:	Unconjugated
Storage:	Store the antibody undiluted at 2-8°C for one month or (in aliquots) at -20°C for longer. Avoid repeated freezing and thawing.
Stability:	Shelf life: one year from despatch.
Gene Name:	succinate dehydrogenase complex subunit D
Database Link:	Entrez Gene 6392 Human O14521



[View online »](#)

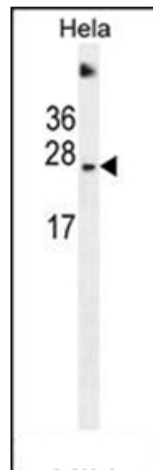
Background: Complex II of the respiratory chain, which is specifically involved in the oxidation of succinate, carries electrons from FADH to CoQ. The complex is composed of four nuclear-encoded subunits and is localized in the mitochondrial inner membrane. The subunit D protein is one of two integral membrane proteins anchoring the complex to the matrix side of the membrane. Mutations in SDHD have been linked to hereditary paraganglioma.

Synonyms: SDH4, CybS, QPs3, CII-4, Succinate dehydrogenase complex subunit D

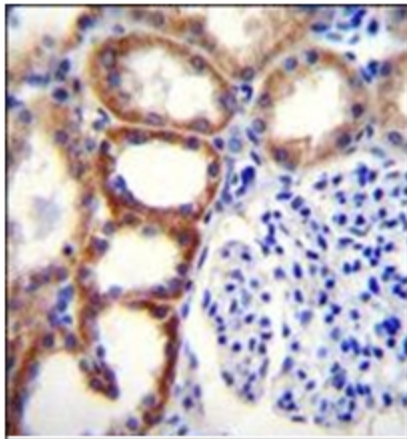
Note: **Molecular Weight:** 17043 Da

Protein Pathways: Alzheimer's disease, Citrate cycle (TCA cycle), Huntington's disease, Metabolic pathways, Oxidative phosphorylation, Parkinson's disease

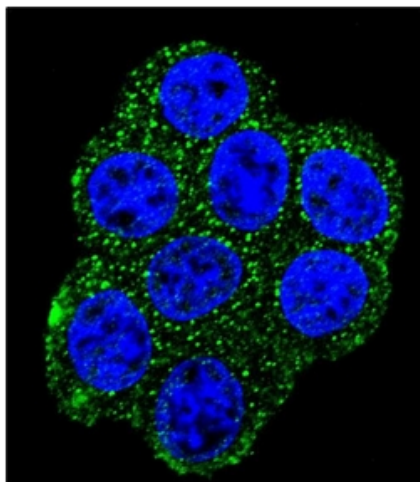
Product images:



Western blot analysis of SDHD Antibody (N-term) in HeLa cell line lysates (35ug/lane). This demonstrates the SDHD antibody detected the SDHD protein (arrow).



Immunohistochemistry analysis in Formalin Fixed, Paraffin Embedded Human kidney tissue stained with SDHD Antibody (N-term) followed by peroxidase conjugation of the secondary antibody and DAB staining. This data demonstrates the use of SDHD Antibody (N-term) for immunohistochemistry. Clinical relevance has not been evaluated.



Confocal Immunofluorescent analysis of SDHD Antibody (N-term) with HeLa cell followed by Alexa Fluor 488-conjugated Goat anti-Rabbit IgG (green). DAPI was used to stain the cell nuclear (blue).