

Product datasheet for **AP53822PU-N**

Syntenin 2 (SDCBP2) (N-term) Rabbit Polyclonal Antibody

Product data:

Product Type:	Primary Antibodies
Applications:	WB
Recommended Dilution:	ELISA: 1/1,000. Western blotting: 1/100-1/500.
Reactivity:	Human
Host:	Rabbit
Isotype:	Ig
Clonality:	Polyclonal
Immunogen:	KLH conjugated synthetic peptide between 12-42 amino acids from the N-terminal region of Human SDCBP2 (NP_536737.3, NP_056500.2)
Specificity:	Recognizes SDCBP2 (N-term).
Formulation:	PBS with 0.09% (W/V) Sodium Azide as preservative State: Aff - Purified State: Liquid purified Ig fraction
Concentration:	lot specific
Purification:	Protein A column followed by peptide Affinity purification
Conjugation:	Unconjugated
Storage:	Store the antibody undiluted at 2-8°C for one month or (in aliquots) at -20°C for longer. Avoid repeated freezing and thawing.
Stability:	Shelf life: one year from despatch.
Gene Name:	syndecan binding protein 2
Database Link:	Entrez Gene 27111 Human Q9H190



[View online »](#)

Background:

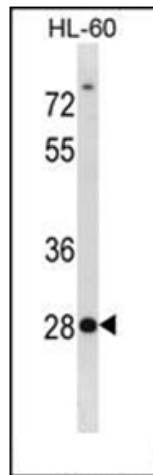
Syntenin 2 binds to the cytoplasmic domains of the syndecans: it contains a tandem repeat of PDZ domains that reacts with the FYA (phe-tyr-ala) C-terminal amino acid sequence of the syndecans. Cells that overexpress the fusion protein show numerous cell surface extensions, suggesting that Syntenin 2 may have an effect on cytoskeleton-membrane organization. Therefore, Syntenin 2 may function as an adaptor that couples syndecans to cytoskeletal proteins or cytosolic downstream signal-effectors.

Synonyms:

Syndecan-binding protein 2, SITAC18

Note:

Molecular Weight: 31594 Da

Product images:

Western blot analysis of SDCBP2 Antibody (N-term) in HL-60 cell line lysates (35 ug/lane). This demonstrates the SDCBP2 antibody detected the SDCBP2 protein (arrow).