

## Product datasheet for **AP53821PU-N**

### Syndecan 4 (SDC4) (Center) Rabbit Polyclonal Antibody

#### Product data:

Product Type:	Primary Antibodies
Applications:	WB
Recommended Dilution:	ELISA: 1/1,000. Western blotting: 1/100-1/500.
Reactivity:	Human
Host:	Rabbit
Isotype:	Ig
Clonality:	Polyclonal
Immunogen:	KLH conjugated synthetic peptide between 97-127 amino acids from the Central region of Human SDC4
Specificity:	Recognizes SDC4 (Center).
Formulation:	PBS with 0.09% (W/V) Sodium Azide as preservative State: Aff - Purified State: Liquid purified Ig fraction
Concentration:	lot specific
Purification:	Protein A column followed by peptide Affinity purification
Conjugation:	Unconjugated
Storage:	Store the antibody undiluted at 2-8°C for one month or (in aliquots) at -20°C for longer. Avoid repeated freezing and thawing.
Stability:	Shelf life: one year from despatch.
Gene Name:	syndecan 4
Database Link:	<a href="#">Entrez Gene 6385 Human P31431</a>
Background:	The protein encoded by this gene is a transmembrane (type I) heparan sulfate proteoglycan that functions as a receptor in intracellular signaling. The encoded protein is found as a homodimer and is a member of the syndecan proteoglycan family. This gene is found on chromosome 20, while a pseudogene has been found on chromosome 22.
Synonyms:	SYND4, Amphiglycan, Ryudocan core protein



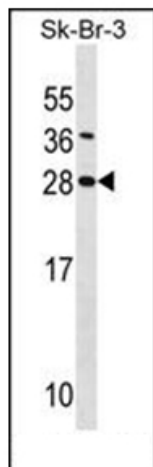
[View online »](#)

**Note:** **Molecular Weight:** 21642 Da

**Protein Families:** Druggable Genome, Transmembrane

**Protein Pathways:** Cell adhesion molecules (CAMs), ECM-receptor interaction

**Product images:**



Western blot analysis of SDC4 Antibody (Center) in SK-BR-3 cell line lysates (35 ug/lane). This demonstrates the SDC4 antibody detected the SDC4 protein (arrow).