

Product datasheet for **AP53820PU-N**

Syndecan 3 (SDC3) (C-term) Rabbit Polyclonal Antibody

Product data:

Product Type:	Primary Antibodies
Applications:	WB
Recommended Dilution:	ELISA: 1/1,000. Western blotting: 1/100-1/500.
Reactivity:	Human
Host:	Rabbit
Isotype:	Ig
Clonality:	Polyclonal
Immunogen:	KLH conjugated synthetic peptide between 411-442 amino acids from the C-terminal region of Human SDC3
Specificity:	Recognizes SDC3 (C-term).
Formulation:	PBS with 0.09% (W/V) Sodium Azide as preservative State: Aff - Purified State: Liquid purified Ig fraction
Concentration:	lot specific
Purification:	Protein A column followed by peptide Affinity purification
Conjugation:	Unconjugated
Storage:	Store the antibody undiluted at 2-8°C for one month or (in aliquots) at -20°C for longer. Avoid repeated freezing and thawing.
Stability:	Shelf life: one year from despatch.
Gene Name:	syndecan 3
Database Link:	Entrez Gene 9672 Human O75056
Background:	The protein encoded by this gene belongs to the syndecan proteoglycan family. It may play a role in the organization of cell shape by affecting the actin cytoskeleton, possibly by transferring signals from the cell surface in a sugar-dependent mechanism. Allelic variants of this gene have been associated with obesity.



[View online »](#)

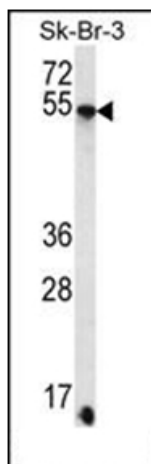
Synonyms: SYND3, KIAA0468

Note: **Molecular Weight:** 45497 Da

Protein Families: Transmembrane

Protein Pathways: Cell adhesion molecules (CAMs), ECM-receptor interaction

Product images:



Western blot analysis of SDC3 Antibody (C-term) in SK-BR-3 cell line lysates (35ug/lane). This demonstrates the SDC3 antibody detected the SDC3 protein (arrow).