

## Product datasheet for **AP53819PU-N**

### SCXA (SCX) (C-term) Rabbit Polyclonal Antibody

#### Product data:

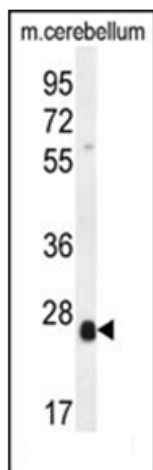
Product Type:	Primary Antibodies
Applications:	WB
Recommended Dilution:	<b>ELISA:</b> 1/1,000. <b>Western blotting:</b> 1/1000.
Reactivity:	Human, Mouse
Host:	Rabbit
Isotype:	Ig
Clonality:	Polyclonal
Immunogen:	KLH conjugated synthetic peptide between 172-201 amino acids from the C-terminal region of Human SCXA (NP_001008272.1, NP_001073983.1)
Specificity:	Recognizes SCXA (C-term).
Formulation:	PBS with 0.09% (W/V) Sodium Azide as preservative State: Aff - Purified State: Liquid purified Ig fraction
Concentration:	lot specific
Purification:	Protein A column followed by peptide Affinity purification
Conjugation:	Unconjugated
Storage:	Store the antibody undiluted at 2-8°C for one month or (in aliquots) at -20°C for longer. Avoid repeated freezing and thawing.
Stability:	Shelf life: one year from despatch.
Gene Name:	scleraxis bHLH transcription factor
Database Link:	<a href="#">Entrez Gene 100129885</a> <a href="#">Entrez Gene 642658</a> <a href="#">Human Q7RTU7</a>
Background:	Plays an early essential role in mesoderm formation, as well as a later role in formation of somite-derived chondrogenic lineages. Contains 1 basic helix-loop-helix (bHLH) domain.
Synonyms:	SCXA, SCXB, BHLHA41, BHLHA48



[View online »](#)

Note: **Molecular Weight:** 21596 Da

**Product images:**



Western blot analysis of SCXA Antibody (C-term) in Mouse cerebellum tissue lysates (35ug/lane). This demonstrates the SCXA antibody detected the SCXA protein (arrow).