

Product datasheet for **AP53813PU-N**

SCLT1 (C-term) Rabbit Polyclonal Antibody

Product data:

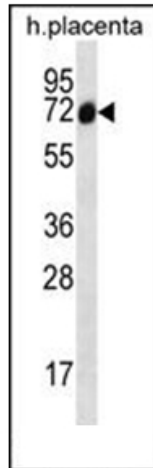
Product Type:	Primary Antibodies
Applications:	IHC, WB
Recommended Dilution:	ELISA: 1/1,000. Western blotting: 1/100-1/500. Immunohistochemistry: 1/10-1/50.
Reactivity:	Human
Host:	Rabbit
Isotype:	Ig
Clonality:	Polyclonal
Immunogen:	KLH conjugated synthetic peptide between 576-605 amino acids from the C-terminal region of Human SCLT1
Specificity:	Recognizes SCLT1 (C-term).
Formulation:	PBS with 0.09% (W/V) Sodium Azide as preservative State: Aff - Purified State: Liquid purified Ig fraction
Concentration:	lot specific
Purification:	Protein A column followed by peptide Affinity purification
Conjugation:	Unconjugated
Storage:	Store the antibody undiluted at 2-8°C for one month or (in aliquots) at -20°C for longer. Avoid repeated freezing and thawing.
Stability:	Shelf life: one year from despatch.
Gene Name:	sodium channel and clathrin linker 1
Database Link:	Entrez Gene 132320 Human Q96NL6
Background:	SCLT1 acts as a linker protein between the voltage-gated sodium channel Na(v)1.8 (SCN10A; MIM 604427) and clathrin (see CLTC, MIM 118955) (Liu et al., 2005 [PubMed 15797711]). [supplied by OMIM].
Synonyms:	SAP1



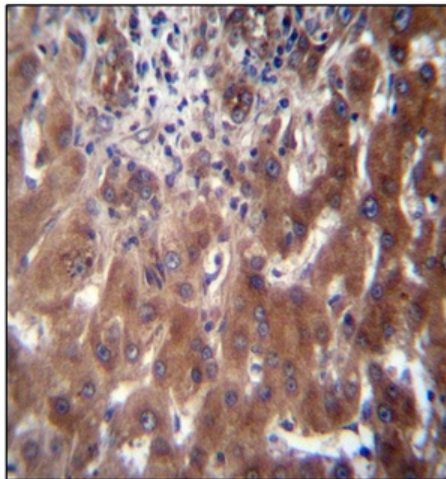
[View online »](#)

Note: **Molecular Weight:** 80910 Da

Product images:



Western blot analysis of SCLT1 Antibody (C-term) in Human placenta tissue lysates (35ug/lane). This demonstrates the SCLT1 antibody detected the SCLT1 protein (arrow).



Immunohistochemistry analysis in Formalin Fixed, Paraffin Embedded Human liver tissue stained with SCLT1 Antibody (C-term) followed by peroxidase conjugation of the secondary antibody and DAB staining. This data demonstrates the use of SCLT1 Antibody (C-term) for immunohistochemistry. Clinical relevance has not been evaluated.