

## Product datasheet for **AP53811PU-N**

### SCHIP1 (IQCJ-SCHIP1) (Center) Rabbit Polyclonal Antibody

#### Product data:

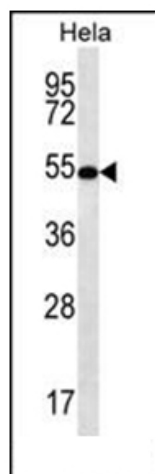
Product Type:	Primary Antibodies
Applications:	IHC, WB
Recommended Dilution:	ELISA: 1/1,000. Western blotting: 1/100-1/500. Immunohistochemistry: 1/10-1/50.
Reactivity:	Human
Host:	Rabbit
Isotype:	Ig
Clonality:	Polyclonal
Immunogen:	KLH conjugated synthetic peptide between 97-126 amino acids from the Central region of Human SCHIP1
Specificity:	Recognizes SCHIP1 (Center).
Formulation:	PBS with 0.09% (W/V) Sodium Azide as preservative State: Aff - Purified State: Liquid purified Ig fraction
Concentration:	lot specific
Purification:	Protein A column followed by peptide Affinity purification
Conjugation:	Unconjugated
Storage:	Store the antibody undiluted at 2-8°C for one month or (in aliquots) at -20°C for longer. Avoid repeated freezing and thawing.
Stability:	Shelf life: one year from despatch.
Gene Name:	IQCJ-SCHIP1 readthrough
Database Link:	<a href="#">Entrez Gene 29970 Human</a> <a href="#">Entrez Gene 100505385 Human</a> <a href="#">B3KU38</a>
Background:	SCHIP1 is a novel coiled-coil protein that specifically associates with schwannomin in vitro and in vivo. Within its coiled-coil region, this protein is homologous to human FEZ proteins and the related <i>Caenorhabditis elegans</i> gene product UNC-76.
Synonyms:	SCHIP-1, Schwannomin-interacting protein 1



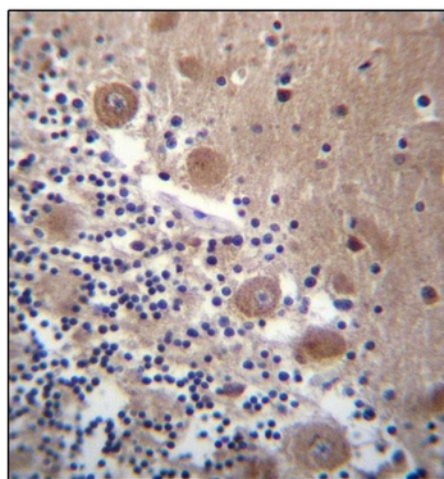
[View online »](#)

Note: **Molecular Weight:** 53480 Da

### Product images:



Western blot analysis of SCHIP1 Antibody (Center) in HeLa cell line lysates (35 ug/lane). This demonstrates the SCHIP1 antibody detected the SCHIP1 protein (arrow).



Immunohistochemistry analysis in Formalin Fixed, Paraffin Embedded Human stomach tissue stained with SCHIP1 Antibody (Center) followed by peroxidase conjugation of the secondary antibody and DAB staining. This data demonstrates the use of SCAP Antibody (N-term) for immunohistochemistry. Clinical relevance has not been evaluated.