

Product datasheet for **AP53810PU-N**

SCEL (Center) Rabbit Polyclonal Antibody

Product data:

Product Type:	Primary Antibodies
Applications:	FC, WB
Recommended Dilution:	ELISA: 1/1,000. Western blotting: 1/100-1/500. Flow Cytometry: 1/10-1/50.
Reactivity:	Human
Host:	Rabbit
Isotype:	Ig
Clonality:	Polyclonal
Immunogen:	KLH conjugated synthetic peptide between 247-277 amino acids from the Central region of Human SCEL
Specificity:	Recognizes SCEL (Center).
Formulation:	PBS with 0.09% (W/V) Sodium Azide as preservative State: Aff - Purified State: Liquid purified Ig fraction
Concentration:	lot specific
Purification:	Protein A column followed by peptide Affinity purification
Conjugation:	Unconjugated
Storage:	Store the antibody undiluted at 2-8°C for one month or (in aliquots) at -20°C for longer. Avoid repeated freezing and thawing.
Stability:	Shelf life: one year from despatch.
Gene Name:	sciellin
Database Link:	Entrez Gene 8796 Human O95171



[View online »](#)

Background:

The protein encoded by this gene is a precursor to the cornified envelope of terminally differentiated keratinocytes. This protein localizes to the periphery of cells and may function in the assembly or regulation of proteins in the cornified envelope. Transcript variants encoding different isoforms exist. A transcript variant utilizing an alternative polyA signal has been described in the literature, but its full-length nature has not been determined.

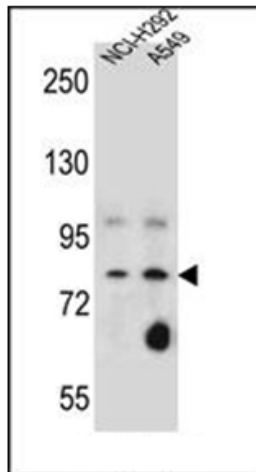
Synonyms:

FLJ21667; MGC22531; sciellin

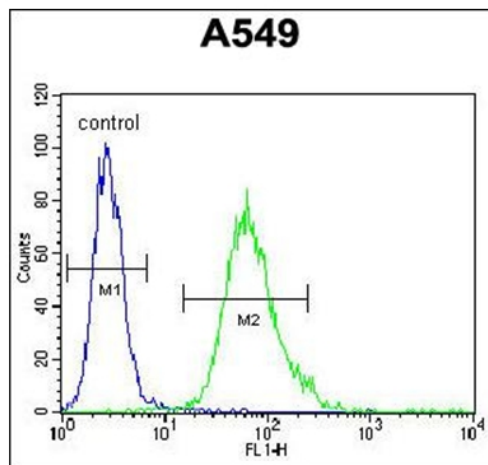
Note:

Molecular Weight: 77552 Da

Product images:



Western blot analysis of SCEL Antibody (Center) in NCI-H292, A549 cell line lysates (35ug/lane). This demonstrates the SCEL antibody detected the SCEL protein (arrow).



Flow Cytometric analysis of A549 cells using SCEL Antibody (Center) (Right histogram) compared to a negative control cell (Left histogram). FITC-conjugated Goat-anti-Rabbit secondary antibodies were used for the analysis.