

Product datasheet for **AP53808PU-N**

SCARF2 (C-term) Rabbit Polyclonal Antibody

Product data:

Product Type:	Primary Antibodies
Applications:	WB
Recommended Dilution:	ELISA: 1/1,000. Western blotting: 1/100-1/500.
Reactivity:	Human, Mouse
Host:	Rabbit
Isotype:	Ig
Clonality:	Polyclonal
Immunogen:	KLH conjugated synthetic peptide between 829-858 amino acids from the C-terminal region of Human SCARF2
Specificity:	Recognizes SCARF2 (C-term).
Formulation:	PBS with 0.09% (W/V) Sodium Azide as preservative State: Aff - Purified State: Liquid purified Ig fraction
Concentration:	lot specific
Purification:	Protein A column followed by peptide Affinity purification
Conjugation:	Unconjugated
Storage:	Store the antibody undiluted at 2-8°C for one month or (in aliquots) at -20°C for longer. Avoid repeated freezing and thawing.
Stability:	Shelf life: one year from despatch.
Gene Name:	scavenger receptor class F member 2
Database Link:	Entrez Gene 91179 Human Q96GP6



[View online »](#)

Background:

The protein encoded by this gene is similar to SCARF1/SREC-I, a scavenger receptor protein that mediates the binding and degradation of acetylated low density lipoprotein (Ac-LDL). This protein has only little activity of internalizing modified low density lipoproteins (LDL), but it can interact with SCARF1 through its extracellular domain. The association of this protein with SCARF1 is suppressed by the presence of scavenger ligands. Alternatively spliced transcript variants encoding distinct isoforms have been reported.

Synonyms:

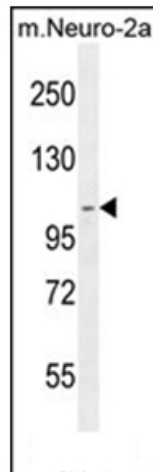
SREC2, SRECRP-1, SRECRP1, SREPCR, NSR1

Note:

Molecular Weight: 91721 Da

Protein Families:

Druggable Genome

Product images:

western blot analysis of SCARF2 Antibody (C-term) in Mouse Neuro-2a cell line lysates (35ug/lane). This demonstrates the SCARF2 antibody detected the SCARF2 protein (arrow).