

Product datasheet for **AP53802PU-N**

SATB2 (Center) Rabbit Polyclonal Antibody

Product data:

Product Type:	Primary Antibodies
Applications:	WB
Recommended Dilution:	ELISA: 1/1,000. Western blotting: 1/100-1/500.
Reactivity:	Human
Host:	Rabbit
Isotype:	Ig
Clonality:	Polyclonal
Immunogen:	KLH conjugated synthetic peptide between 409-439 amino acids from the Central region of Human SATB2 (NP_001165980.1)
Specificity:	Recognizes SATB2 (Center).
Formulation:	PBS with 0.09% (W/V) Sodium Azide as preservative State: Aff - Purified State: Liquid purified Ig fraction
Concentration:	lot specific
Purification:	Protein A column followed by peptide Affinity purification
Conjugation:	Unconjugated
Storage:	Store the antibody undiluted at 2-8°C for one month or (in aliquots) at -20°C for longer. Avoid repeated freezing and thawing.
Stability:	Shelf life: one year from despatch.
Gene Name:	SATB homeobox 2
Database Link:	Entrez Gene 23314 Human Q9UPW6
Background:	This gene encodes a DNA binding protein that specifically binds nuclear matrix attachment regions. The encoded protein is involved in transcription regulation and chromatin remodeling. Defects in this gene are associated with isolated cleft palate and mental retardation. Alternate splicing results in multiple transcript variants that encode the same protein. [provided by RefSeq].



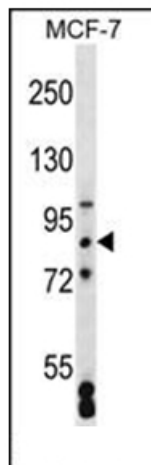
[View online »](#)

Synonyms: KIAA1034

Note: **Molecular Weight:** 82555 Da

Protein Families: Transcription Factors

Product images:



Western blot analysis of SATB2 Antibody (center) in MCF-7 cell line lysates (35 ug/lane). This demonstrates the SATB2 antibody detected the SATB2 protein (arrow).