

Product datasheet for **AP53800PU-N**

SASH1 (Center) Rabbit Polyclonal Antibody

Product data:

Product Type:	Primary Antibodies
Applications:	IHC, WB
Recommended Dilution:	ELISA: 1/1,000. Western blotting: 1/1000. Immunohistochemistry: 1/50-1/100.
Reactivity:	Human, Mouse
Host:	Rabbit
Isotype:	Ig
Clonality:	Polyclonal
Immunogen:	KLH conjugated synthetic peptide between 596-625 amino acids from the Central region of human SASH1.
Specificity:	Recognizes SASH1 (Center).
Formulation:	PBS with 0.09% (W/V) Sodium Azide as preservative State: Aff - Purified State: Liquid purified Ig fraction
Concentration:	lot specific
Purification:	Protein A column followed by peptide Affinity purification
Conjugation:	Unconjugated
Storage:	Store the antibody undiluted at 2-8°C for one month or (in aliquots) at -20°C for longer. Avoid repeated freezing and thawing.
Stability:	Shelf life: one year from despatch.
Gene Name:	SAM and SH3 domain containing 1
Database Link:	Entrez Gene 23328 Human O94885
Background:	SASH1 may have a role in a signaling pathway. Could act as a tumor suppressor. Expressed ubiquitously, with highest levels in lung, placenta, spleen and thymus. Down-regulated in the majority (74%) of breast tumors in comparison with corresponding normal breast epithelial tissues.

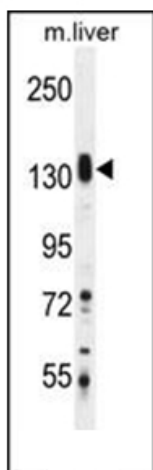


[View online »](#)

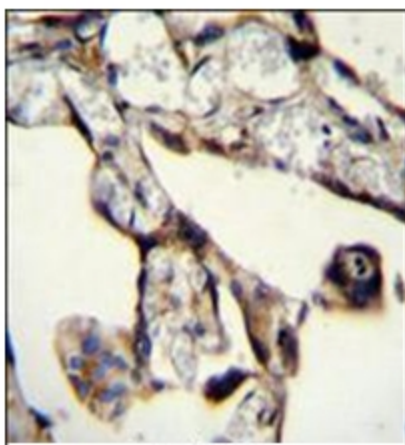
Synonyms: PEPE1, KIAA0790

Note: **Molecular Weight:** 136653 Da

Product images:



Western blot analysis of SASH1 Antibody (Center) in Mouse liver tissue lysates (35 ug/lane). This demonstrates the SASH1 antibody detected the SASH1 protein (arrow).



Immunohistochemistry analysis in Formalin Fixed, Paraffin Embedded Human placenta tissue stained with SASH1 Antibody (N-term) followed by peroxidase conjugation of the secondary antibody and DAB staining. This data demonstrates the use of SASH1 Antibody (Center) for immunohistochemistry. Clinical relevance has not been evaluated.