

## Product datasheet for **AP53798PU-N**

### CIP29 (SARNP) (Center) Rabbit Polyclonal Antibody

#### Product data:

Product Type:	Primary Antibodies
Applications:	WB
Recommended Dilution:	ELISA: 1/1,000. Western blotting: 1/100-1/500.
Reactivity:	Human
Host:	Rabbit
Isotype:	Ig
Clonality:	Polyclonal
Immunogen:	KLH conjugated synthetic peptide between 80-110 amino acids from the Central region of Human SARNP (NP_149073.1)
Specificity:	Recognizes SARNP (Center).
Formulation:	PBS with 0.09% (W/V) Sodium Azide as preservative State: Aff - Purified State: Liquid purified Ig fraction
Concentration:	lot specific
Purification:	Protein A column followed by peptide Affinity purification
Conjugation:	Unconjugated
Storage:	Store the antibody undiluted at 2-8°C for one month or (in aliquots) at -20°C for longer. Avoid repeated freezing and thawing.
Stability:	Shelf life: one year from despatch.
Gene Name:	SAP domain containing ribonucleoprotein
Database Link:	<a href="#">Entrez Gene 84324 Human P82979</a>
Background:	This gene encodes a protein that is upregulated in response to various cytokines. The encoded protein may play a role in cell cycle progression. A translocation between this gene and the myeloid/lymphoid leukemia gene, resulting in expression of a chimeric protein, has been associated with acute myelomonocytic leukemia. Pseudogenes exist on chromosomes 7 and 8. Alternatively spliced transcript variants have been described. [provided by RefSeq].

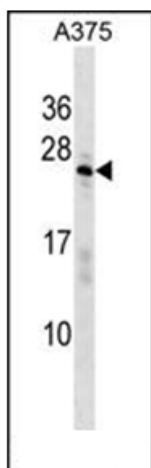


[View online »](#)

Synonyms: CIP29, HCC1, HSPC316

Note: **Molecular Weight:** 23671 Da

**Product images:**



Western blot analysis of SARNP Antibody (Center) in A375 cell line lysates (35 ug/lane). This demonstrates the SARNP antibody detected the SARNP protein (arrow).