

Product datasheet for **AP53796PU-N**

SAR1B (Center) Rabbit Polyclonal Antibody

Product data:

Product Type:	Primary Antibodies
Applications:	IHC, WB
Recommended Dilution:	ELISA: 1/1,000. Western blotting: 1/100-1/500. Immunohistochemistry: 1/50-1/100.
Reactivity:	Human
Host:	Rabbit
Isotype:	Ig
Clonality:	Polyclonal
Immunogen:	KLH conjugated synthetic peptide between 96-124 amino acids from the Central region of Human SAR1B
Specificity:	Recognizes SAR1B (Center).
Formulation:	PBS with 0.09% (W/V) Sodium Azide as preservative State: Aff - Purified State: Liquid purified Ig fraction
Concentration:	lot specific
Purification:	Protein A column followed by peptide Affinity purification
Conjugation:	Unconjugated
Storage:	Store the antibody undiluted at 2-8°C for one month or (in aliquots) at -20°C for longer. Avoid repeated freezing and thawing.
Stability:	Shelf life: one year from despatch.
Gene Name:	secretion associated Ras related GTPase 1B
Database Link:	Entrez Gene 51128 Human Q9Y6B6



[View online »](#)

Background:

SAR1B belongs to the small GTPase superfamily, SAR1 family. It is involved in transport from the endoplasmic reticulum to the Golgi apparatus and is activated by the guanine nucleotide exchange factor PREB. SAR1B is involved in the selection of the protein cargo and the assembly of the COPII coat complex. Defects in SAR1B are the cause of chylomicron retention disease (CMRD). CMRD is an autosomal recessive disorder of severe fat malabsorption associated with failure to thrive in infancy. The conditions are characterized by deficiency of fat-soluble vitamins, low blood cholesterol levels, and a selective absence of chylomicrons from blood. Affected individuals accumulate chylomicron-like particles in membrane-bound compartments of enterocytes, which contain large cytosolic lipid droplets.

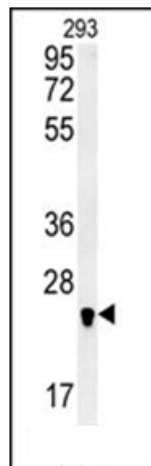
Cellular localization: Endoplasmic reticulum membrane; Peripheral membrane protein. Golgi apparatus, Golgi stack membrane; Peripheral membrane protein. Associated with the endoplasmic reticulum and Golgi stacks, in particular in the juxta-nuclear Golgi region.

Synonyms:

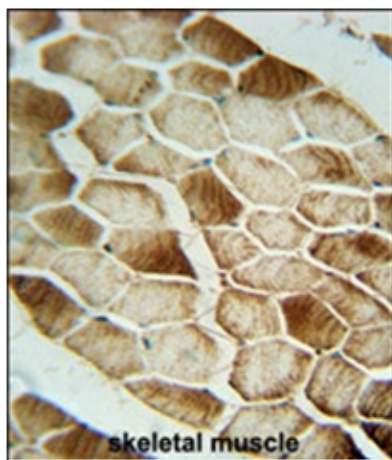
SAR1B, SARA2, SARB, GTP-binding protein SAR1b, GTBPB

Note:

Molecular Weight: 22410 Da

Product images:

Western blot analysis of SAR1B Antibody (Center) in 293 cell line lysates (35 ug/lane). This demonstrates the SAR1B antibody detected the SAR1B protein (arrow).



Immunohistochemistry analysis in Formalin Fixed, Paraffin Embedded Human skeletal muscle stained with SAR1B antibody (Center) followed by peroxidase conjugation of the secondary antibody and DAB staining. This data demonstrates the use of the SAR1B antibody (Center) for immunohistochemistry. Clinical relevance has not been evaluated.