

## Product datasheet for **AP53795PU-N**

### **SAP18 (Center) Rabbit Polyclonal Antibody**

#### **Product data:**

Product Type:	Primary Antibodies
Applications:	WB
Recommended Dilution:	ELISA: 1/1,000. Western blotting: 1/100-1/500.
Reactivity:	Human
Host:	Rabbit
Isotype:	Ig
Clonality:	Polyclonal
Immunogen:	KLH conjugated synthetic peptide between 57-86 amino acids from the Central region of Human SAP18
Specificity:	Recognizes SAP18 (Center).
Formulation:	PBS with 0.09% (W/V) Sodium Azide as preservative State: Aff - Purified State: Liquid purified Ig fraction
Concentration:	lot specific
Purification:	Protein A column followed by peptide Affinity purification
Conjugation:	Unconjugated
Storage:	Store the antibody undiluted at 2-8°C for one month or (in aliquots) at -20°C for longer. Avoid repeated freezing and thawing.
Stability:	Shelf life: one year from despatch.
Gene Name:	Homo sapiens Sin3A associated protein 18 (SAP18)
Database Link:	<a href="#">Entrez Gene 10284 Human</a> <a href="#">O00422</a>



[View online »](#)

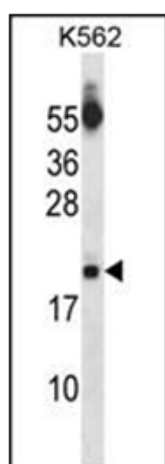
**Background:** Component of the SIN3-repressing complex. Enhances the ability of SIN3-HDAC1-mediated transcriptional repression. When tethered to the promoter, it can direct the formation of a repressive complex to core histone proteins. Component of a splicing-dependent multiprotein exon junction complex (EJC) deposited at splice junction on mRNAs. The EJC is a dynamic structure consisting of a few core proteins and several more peripheral nuclear and cytoplasmic associated factors that join the complex only transiently either during EJC assembly or during subsequent mRNA metabolism.

**Synonyms:** 2HOR0202, GIG38

**Note:** **Molecular Weight:** 17561 Da

**Protein Families:** Druggable Genome, Transcription Factors

### Product images:



Western blot analysis of SAP18 Antibody (Center) in K562 cell line lysates (35ug/lane). This demonstrates the SAP18 antibody detected the SAP18 protein (arrow).