

Product datasheet for **AP53794PU-N**

SAP130 (C-term) Rabbit Polyclonal Antibody

Product data:

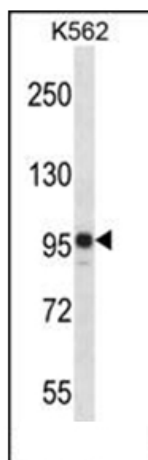
Product Type:	Primary Antibodies
Applications:	WB
Recommended Dilution:	ELISA: 1/1,000. Western blotting: 1/100-1/500.
Reactivity:	Human
Host:	Rabbit
Isotype:	Ig
Clonality:	Polyclonal
Immunogen:	KLH conjugated synthetic peptide between 908-937 amino acids from the C-terminal region of Human SAP130
Specificity:	Recognizes SAP130 (C-term).
Formulation:	PBS with 0.09% (W/V) Sodium Azide as preservative State: Aff - Purified State: Liquid purified Ig fraction
Concentration:	lot specific
Purification:	Protein A column followed by peptide Affinity purification
Conjugation:	Unconjugated
Storage:	Store the antibody undiluted at 2-8°C for one month or (in aliquots) at -20°C for longer. Avoid repeated freezing and thawing.
Stability:	Shelf life: one year from despatch.
Gene Name:	Sin3A associated protein 130kDa
Database Link:	Entrez Gene 79595 Human Q9H0E3
Background:	SAP130 Acts as a transcriptional repressor. May function in the assembly and/or enzymatic activity of the mSin3A corepressor complex or in mediating interactions between the complex and other regulatory complexes.
Synonyms:	Histone deacetylase complex subunit SAP130, Sin3-associated polypeptide p130



[View online »](#)

Note: **Molecular Weight:** 110324 Da

Product images:



Western blot analysis of SAP130 Antibody (C-term) in K562 cell line lysates (35 ug/lane). This demonstrates the SAP130 antibody detected the SAP130 protein (arrow).