

Product datasheet for **AP53793PU-N**

SAMD8 (N-term) Rabbit Polyclonal Antibody

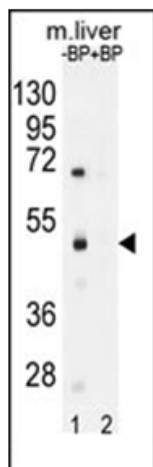
Product data:

Product Type:	Primary Antibodies
Applications:	WB
Recommended Dilution:	ELISA: 1/1,000. Western blotting: 1/100-1/500.
Reactivity:	Human, Mouse
Host:	Rabbit
Isotype:	Ig
Clonality:	Polyclonal
Immunogen:	KLH conjugated synthetic peptide between 45-75 amino acids from the N-terminal region of Human SAMD8
Specificity:	Recognizes SAMD8 (N-term).
Formulation:	PBS with 0.09% (W/V) Sodium Azide as preservative State: Aff - Purified State: Liquid purified Ig fraction
Concentration:	lot specific
Purification:	Protein A column followed by peptide Affinity purification
Conjugation:	Unconjugated
Storage:	Store the antibody undiluted at 2-8°C for one month or (in aliquots) at -20°C for longer. Avoid repeated freezing and thawing.
Stability:	Shelf life: one year from despatch.
Gene Name:	sterile alpha motif domain containing 8
Database Link:	Entrez Gene 67630 Mouse Entrez Gene 142891 Human Q96LT4
Synonyms:	FLJ25082; SMSr
Note:	Molecular Weight: 48321 Da
Protein Families:	Transmembrane



[View online »](#)

Product images:



Western blot analysis of SAMd8 Antibody (N-term) pre-incubated without (Lane 1) and with (Lane 2) blocking peptide in Mouse liver tissue lysate. SAMd8 Antibody (Center) (arrow) was detected using the purified Pab (1/60/250 dilution).