

## Product datasheet for **AP53792PU-N**

### **SAMD7 (Center) Rabbit Polyclonal Antibody**

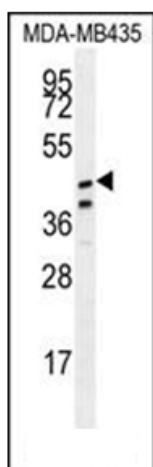
#### **Product data:**

Product Type:	Primary Antibodies
Applications:	IHC, WB
Recommended Dilution:	ELISA: 1/1,000. Western blotting: 1/100-1/500. Immunohistochemistry: 1/10-1/50.
Reactivity:	Human
Host:	Rabbit
Isotype:	Ig
Clonality:	Polyclonal
Immunogen:	KLH conjugated synthetic peptide between 209-238 amino acids from the Central region of Human SAMD7
Specificity:	Recognizes SAMD7 (Center).
Formulation:	PBS with 0.09% (W/V) Sodium Azide as preservative State: Aff - Purified State: Liquid purified Ig fraction
Concentration:	lot specific
Purification:	Protein A column followed by peptide Affinity purification
Conjugation:	Unconjugated
Storage:	Store the antibody undiluted at 2-8°C for one month or (in aliquots) at -20°C for longer. Avoid repeated freezing and thawing.
Stability:	Shelf life: one year from despatch.
Gene Name:	sterile alpha motif domain containing 7
Database Link:	<a href="#">Entrez Gene 344658 Human Q7Z3H4</a>
Synonyms:	Sterile alpha motif domain-containing protein 7
Note:	<b>Molecular Weight:</b> 49112 Da

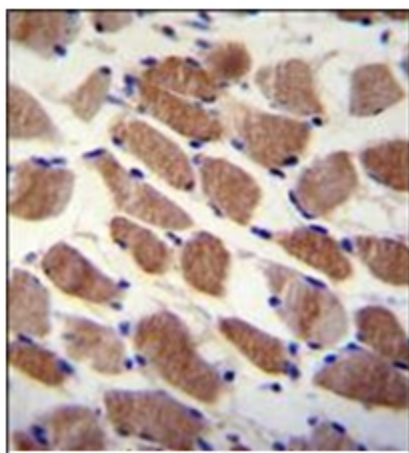


[View online »](#)

## Product images:



Western blot analysis in MDA-MB435 cell line lysates (35 ug/lane) using SAMD7 Antibody (Center). This demonstrates the SAMD7 antibody detected the SAMD7 protein (arrow).



Immunohistochemistry analysis in Formalin Fixed, Paraffin Embedded Human skeletal muscle stained with SAMD7 Antibody (Center) followed by peroxidase conjugation of the secondary antibody and DAB staining. This data demonstrates the use of SAMD7 Antibody (Center) for immunohistochemistry. Clinical relevance has not been evaluated.