

Product datasheet for **AP53789PU-N**

SACM1L (C-term) Rabbit Polyclonal Antibody

Product data:

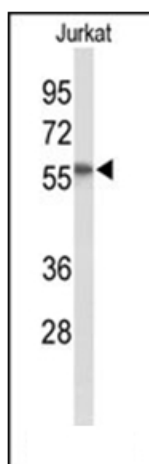
Product Type:	Primary Antibodies
Applications:	WB
Recommended Dilution:	ELISA: 1/1,000. Western blotting: 1/100-1/500.
Reactivity:	Human
Host:	Rabbit
Isotype:	Ig
Clonality:	Polyclonal
Immunogen:	KLH conjugated synthetic peptide between 415~444 amino acids from the C-terminal region of Human SACM1L.
Specificity:	Recognizes SACM1L (C-term).
Formulation:	PBS with 0.09% (W/V) Sodium Azide as preservative State: Aff - Purified State: Liquid purified Ig fraction
Concentration:	lot specific
Purification:	Protein A column followed by peptide Affinity purification
Conjugation:	Unconjugated
Storage:	Store the antibody undiluted at 2-8°C for one month or (in aliquots) at -20°C for longer. Avoid repeated freezing and thawing.
Stability:	Shelf life: one year from despatch.
Gene Name:	SAC1 suppressor of actin mutations 1-like (yeast)
Database Link:	Entrez Gene 22908 Human Q9NTJ5
Background:	SACM1L functions as Phosphoinositide phosphatase that hydrolyzes PtdIns(3)P and PtdIns(4)P. Has low activity towards PtdIns(3,5)P2 (By similarity).
Synonyms:	KIAA0851
Note:	Molecular Weight: 66967 Da



[View online »](#)

Protein Families: Druggable Genome, Transmembrane

Product images:



Western blot analysis in Jurkat cell line lysates (35 ug/lane) using SACM1L Antibody (C-term). SACM1L (arrow) was detected using the purified Pab.