

## Product datasheet for **AP53785PU-N**

### SLC6A12 (N-term) Rabbit Polyclonal Antibody

#### Product data:

Product Type:	Primary Antibodies
Applications:	FC, WB
Recommended Dilution:	ELISA: 1/1,000. Western blotting: 1/100-1/500. Flow Cytometry: 1/10-1/50.
Reactivity:	Human
Host:	Rabbit
Isotype:	Ig
Clonality:	Polyclonal
Immunogen:	KLH conjugated synthetic peptide between 16-46 amino acids from the N-terminal region of Human S6A12
Specificity:	Recognizes S6A12 (N-term).
Formulation:	PBS with 0.09% (W/V) Sodium Azide as preservative State: Aff - Purified State: Liquid purified Ig fraction
Concentration:	lot specific
Purification:	Protein A column followed by peptide Affinity purification
Conjugation:	Unconjugated
Storage:	Store the antibody undiluted at 2-8°C for one month or (in aliquots) at -20°C for longer. Avoid repeated freezing and thawing.
Stability:	Shelf life: one year from despatch.
Gene Name:	solute carrier family 6 member 12
Database Link:	<a href="#">Entrez Gene 6539 Human P48065</a>
Background:	Transports betaine and GABA. May have a role in regulation of GABAergic transmission in the brain through the reuptake of GABA into presynaptic terminals, as well as in osmotic regulation.
Synonyms:	BGT-1

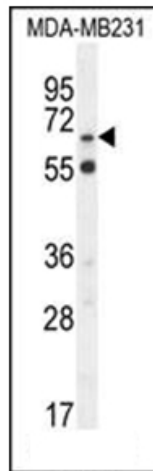


[View online »](#)

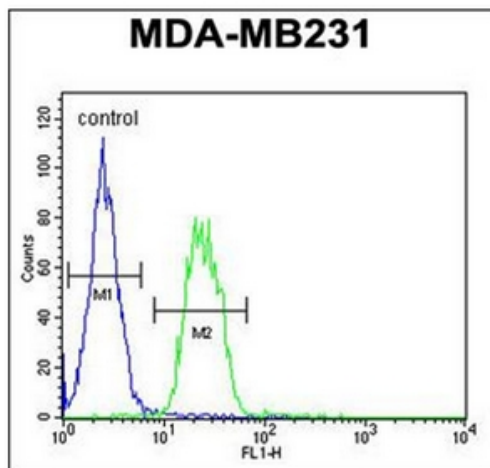
Note: **Molecular Weight:** 69368 Da

Protein Families: Druggable Genome, Transmembrane

### Product images:



Western blot analysis in MDA-MB231 cell line lysates (35 ug/lane) using S6A12 Antibody (N-term). This demonstrates the S6A12 antibody detected the S6A12 protein (arrow).



Flow Cytometry analysis of MDA-MB231 cells using S6A12 Antibody (N-term) (Right histogram) compared to a negative control cell (Left histogram). FITC-conjugated Goat-anti-Rabbit secondary antibodies were used for the analysis.