

Product datasheet for **AP53783PU-N**

BIGM103 (SLC39A8) (Center) Rabbit Polyclonal Antibody

Product data:

Product Type:	Primary Antibodies
Applications:	FC, WB
Recommended Dilution:	ELISA: 1/1,000. Flow Cytometry: 1/10-1/50. Western blotting: 1/100-1/500.
Reactivity:	Human
Host:	Rabbit
Isotype:	Ig
Clonality:	Polyclonal
Immunogen:	KLH conjugated synthetic peptide between 225~254 amino acids from the Center region of Human SLC39A8
Specificity:	Recognizes SLC39A8 (Center).
Formulation:	PBS with 0.09% (W/V) Sodium Azide as preservative State: Aff - Purified State: Liquid purified Ig fraction
Concentration:	lot specific
Purification:	Protein A column followed by peptide Affinity purification
Conjugation:	Unconjugated
Storage:	Store the antibody undiluted at 2-8°C for one month or (in aliquots) at -20°C for longer. Avoid repeated freezing and thawing.
Stability:	Shelf life: one year from despatch.
Gene Name:	solute carrier family 39 member 8
Database Link:	Entrez Gene 64116 Human Q9C0K1



[View online »](#)

Background:

SLC39A8 encodes a member of the SLC39 family of solute-carrier genes, which show structural characteristics of zinc transporters. The encoded protein is glycosylated and found in the plasma membrane and mitochondria, and functions in the cellular import of zinc at the onset of inflammation. It is also thought to be the primary transporter of the toxic cation cadmium, which is found in cigarette smoke.

Synonyms:

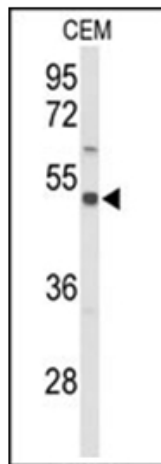
ZIP8, ZIP-8, LZT-Hs6, BIGM103

Note:

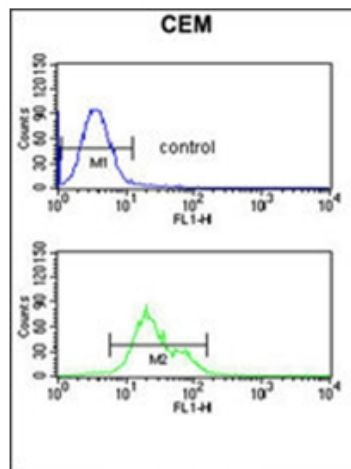
Molecular Weight: 49631 Da

Protein Families:

Transmembrane

Product images:


Western blot analysis in CEM cerebellum cell line lysates (35 ug/lane) using SLC39A8 Antibody (Center). SLC39A8 (arrow) was detected using the purified Pab.



Flow Cytometric analysis of CEM cells using SLC39A8 Antibody (Center) (Bottom histogram) compared to a Negative Control cell (Top histogram). FITC-conjugated Goat-anti-Rabbit secondary antibodies were used for the analysis.