

Product datasheet for **AP53781PU-N**

SLC35E2B (N-term) Rabbit Polyclonal Antibody

Product data:

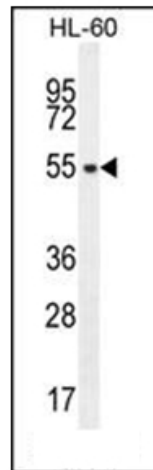
Product Type:	Primary Antibodies
Applications:	FC, IHC, WB
Recommended Dilution:	ELISA: 1/1,000. Western blotting: 1/100-1/500. Flow Cytometry: 1/10-1/50. Immunohistochemistry: 1/50-1/100.
Reactivity:	Human
Host:	Rabbit
Isotype:	Ig
Clonality:	Polyclonal
Immunogen:	KLH conjugated synthetic peptide between 1-30 amino acids from the N-terminal region of Human SLC35E2 (NP_001104251.1)
Specificity:	Recognizes SLC35E2 (N-term)
Formulation:	PBS with 0.09% (W/V) Sodium Azide as preservative State: Aff - Purified State: Liquid purified Ig fraction
Concentration:	lot specific
Purification:	Protein A column followed by peptide Affinity purification
Conjugation:	Unconjugated
Storage:	Store the antibody undiluted at 2-8°C for one month or (in aliquots) at -20°C for longer. Avoid repeated freezing and thawing.
Stability:	Shelf life: one year from despatch.
Gene Name:	solute carrier family 35 member E2B
Database Link:	Entrez Gene 728661 Human P0CK96
Synonyms:	KIAA0447
Note:	Molecular Weight: 43777 Da



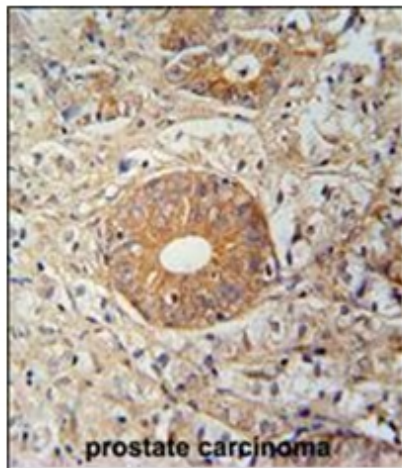
[View online »](#)

Protein Families: Transmembrane

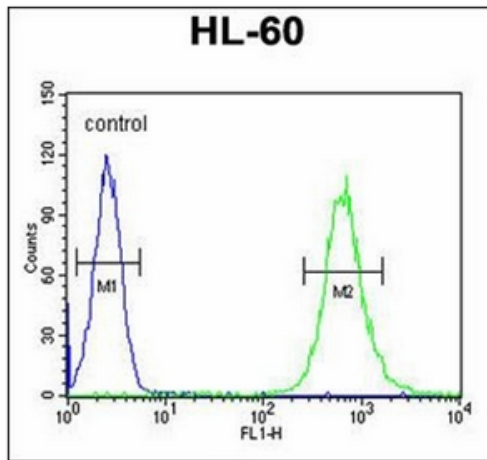
Product images:



western blot analysis in HL-60 cell line lysates (35ug/lane) using SLC35E2 Antibody (N-term). This demonstrates the SLC35E2 antibody detected the SLC35E2 protein (arrow).



Immunohistochemistry analysis in Formalin Fixed, Paraffin Embedded Human prostate carcinoma stained with SLC35E2 Antibody (N-term) followed by peroxidase conjugation of the secondary antibody and DAB staining. This data demonstrates the use of the SLC35E2 Antibody (N-term) for immunohistochemistry. Clinical relevance has not been evaluated.



Flow Cytometric analysis of HL-60 cells using SLC35E2 Antibody (N-term) (Right histogram) compared to a negative control cell (Left histogram). FITC-conjugated Goat-anti-Rabbit secondary antibodies were used for the analysis.