

Product datasheet for **AP53780PU-N**

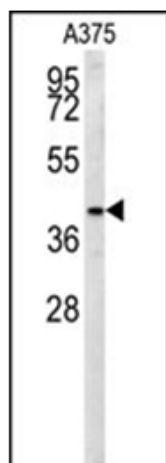
SLC35B2 (C-term) Rabbit Polyclonal Antibody

Product data:

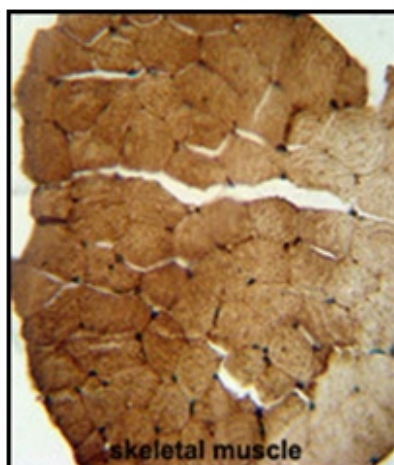
Product Type:	Primary Antibodies
Applications:	IHC, WB
Recommended Dilution:	ELISA: 1/1,000. Western blotting: 1/100-1/500. Immunohistochemistry: 1/50-1/100.
Reactivity:	Human
Host:	Rabbit
Isotype:	Ig
Clonality:	Polyclonal
Immunogen:	KLH conjugated synthetic peptide between 400-429 amino acids from the C-terminal region of Human SLC35B2 (NP_835361.1)
Specificity:	Recognizes SLC35B2 (C-term).
Formulation:	PBS with 0.09% (W/V) Sodium Azide as preservative State: Aff - Purified State: Liquid purified Ig fraction
Concentration:	lot specific
Purification:	Protein A column followed by peptide Affinity purification
Conjugation:	Unconjugated
Storage:	Store the antibody undiluted at 2-8°C for one month or (in aliquots) at -20°C for longer. Avoid repeated freezing and thawing.
Stability:	Shelf life: one year from despatch.
Gene Name:	solute carrier family 35 member B2
Database Link:	Entrez Gene 347734 Human Q8TB61
Synonyms:	PAPS transporter 1
Note:	Molecular Weight: 47515 Da
Protein Families:	Druggable Genome, Transmembrane



[View online »](#)

Product images:

Western blot analysis in A375 cell line lysates (35 ug/lane) using SLC35B2 Antibody (C-term). This demonstrates the S35B2 antibody detected the S35B2 protein (arrow).



Immunohistochemistry analysis in Formalin Fixed, Paraffin Embedded Human skeletal muscle stained with SLC35B2 Antibody (C-term) followed by peroxidase conjugation of the secondary antibody and DAB staining. This data demonstrates the use of the S35B2 antibody (C-term) for Immunohistochemistry. Clinical relevance has not been evaluated.