

## Product datasheet for **AP53779PU-N**

### **S100Z (N-term) Rabbit Polyclonal Antibody**

#### **Product data:**

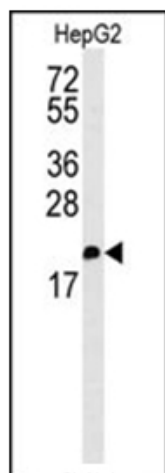
<b>Product Type:</b>	Primary Antibodies
<b>Applications:</b>	WB
<b>Recommended Dilution:</b>	ELISA: 1/1,000. Western blotting: 1/100-1/500.
<b>Reactivity:</b>	Human, Mouse
<b>Host:</b>	Rabbit
<b>Isotype:</b>	Ig
<b>Clonality:</b>	Polyclonal
<b>Immunogen:</b>	KLH conjugated synthetic peptide between 6-36 amino acids from the N-terminal region of Human S100Z
<b>Specificity:</b>	Recognizes S100Z (N-term).
<b>Formulation:</b>	PBS with 0.09% (W/V) Sodium Azide as preservative State: Aff - Purified State: Liquid purified Ig fraction
<b>Concentration:</b>	lot specific
<b>Purification:</b>	Protein A column followed by peptide Affinity purification
<b>Conjugation:</b>	Unconjugated
<b>Storage:</b>	Store the antibody undiluted at 2-8°C for one month or (in aliquots) at -20°C for longer. Avoid repeated freezing and thawing.
<b>Stability:</b>	Shelf life: one year from despatch.
<b>Gene Name:</b>	S100 calcium binding protein Z
<b>Database Link:</b>	<a href="#">Entrez Gene 170591 Human Q8WYG8</a>
<b>Background:</b>	Members of the S100 protein family contain 2 calcium-binding EF-hands and exhibit cell-type specific expression patterns. For additional background information on S100 proteins, see MIM 114085
<b>Synonyms:</b>	S100-Z



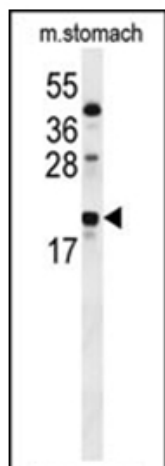
[View online »](#)

Note: **Molecular Weight:** 11620 Da

### Product images:



Western blot analysis in HepG2 cell line lysates (35 ug/lane) using S100Z Antibody (Center). This demonstrates the S100Z antibody detected the S100Z protein (arrow).



Western blot analysis in mouse stomach tissue lysates (35 ug/lane) using S100Z Antibody (Center). This demonstrates the S100Z antibody detected the S100Z protein (arrow).