

## Product datasheet for **AP53778PU-N**

### **S100 beta (S100B) (Center) Rabbit Polyclonal Antibody**

#### Product data:

Product Type:	Primary Antibodies
Applications:	IHC, WB
Recommended Dilution:	<b>Western blotting:</b> 1/1000. <b>Immunohistochemistry on Paraffin sections</b> according to customer's information, the antibody works on Formalin-Fixed Paraffin-Embedded human brain tissue (10 µg/ml).
Reactivity:	Human
Host:	Rabbit
Isotype:	Ig
Clonality:	Polyclonal
Immunogen:	KLH conjugated synthetic peptide from human S100B/S-100; central epitope
Specificity:	Recognizes human S100B (center). Other species not tested.
Formulation:	PBS with 0.09% (W/V) Sodium Azide as preservative State: Aff - Purified State: Liquid purified Ig fraction
Concentration:	lot specific
Purification:	Protein A column followed by peptide affinity purification
Conjugation:	Unconjugated
Storage:	Store the antibody undiluted at 2-8°C for one month or (in aliquots) at -20°C for longer. Avoid repeated freezing and thawing.
Stability:	Shelf life: one year from despatch.
Gene Name:	S100 calcium binding protein B
Database Link:	<u><a href="#">Entrez Gene 6285 Human P04271</a></u>



[View online »](#)

**Background:**

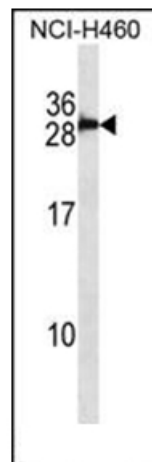
The protein encoded by this gene is a member of the S100 family of proteins containing 2 EF-hand calcium-binding motifs. S100 proteins are localized in the cytoplasm and/or nucleus of a wide range of cells, and involved in the regulation of a number of cellular processes such as cell cycle progression and differentiation. S100 genes include at least 13 members which are located as a cluster on chromosome 1q21; however, this gene is located at 21q22.3. This protein may function in Neurite extension, proliferation of melanoma cells, stimulation of Ca<sup>2+</sup> fluxes, inhibition of PKC-mediated phosphorylation, astrocytosis and axonal proliferation, and inhibition of microtubule assembly. Chromosomal rearrangements and altered expression of this gene have been implicated in several neurological, neoplastic, and other types of diseases, including Alzheimer's disease, Down's syndrome, epilepsy, amyotrophic lateral sclerosis, melanoma, and type I diabetes.

**Synonyms:**

Protein S100-B, S100 beta, S100 calcium-binding protein B, S-100 protein subunit beta, S-100 protein beta chain, Astrocyte Marker

**Note:**

**Molecular Weight:** 10713 Da

**Product images:**


Western blot analysis in NCI-H460 cell line lysates (35 ug/lane) using S100B Antibody (Center). This demonstrates the S100B/S-100 antibody detected the S100B/S-100 protein (arrow).