

Product datasheet for **AP53776PU-N**

S100A1 (C-term) Rabbit Polyclonal Antibody

Product data:

Product Type:	Primary Antibodies
Applications:	IHC, WB
Recommended Dilution:	ELISA: 1/1,000. Western blotting: 1/100-1/500. Immunohistochemistry: 1/50-1/100.
Reactivity:	Human
Host:	Rabbit
Isotype:	Ig
Clonality:	Polyclonal
Immunogen:	KLH conjugated synthetic peptide between 52-83 amino acids from the C-terminal region of Human S100A1
Specificity:	Recognizes S100A1 (C-term).
Formulation:	PBS with 0.09% (W/V) Sodium Azide as preservative State: Aff - Purified State: Liquid purified Ig fraction
Concentration:	lot specific
Purification:	Protein A column followed by peptide Affinity purification
Conjugation:	Unconjugated
Storage:	Store the antibody undiluted at 2-8°C for one month or (in aliquots) at -20°C for longer. Avoid repeated freezing and thawing.
Stability:	Shelf life: one year from despatch.
Gene Name:	S100 calcium binding protein A1
Database Link:	Entrez Gene 6271 Human P23297



[View online »](#)

Background:

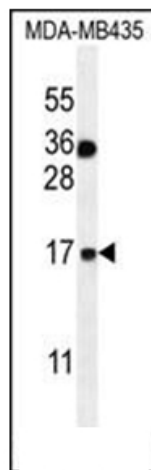
The protein encoded by this gene is a member of the S100 family of proteins containing 2 EF-hand calcium-binding motifs. S100 proteins are localized in the cytoplasm and/or nucleus of a wide range of cells, and involved in the regulation of a number of cellular processes such as cell cycle progression and differentiation. S100 genes include at least 13 members which are located as a cluster on chromosome 1q21. This protein may function in stimulation of Ca²⁺-induced Ca²⁺ release, inhibition of microtubule assembly, and inhibition of protein kinase C-mediated phosphorylation. Reduced expression of this protein has been implicated in cardiomyopathies.

Synonyms:

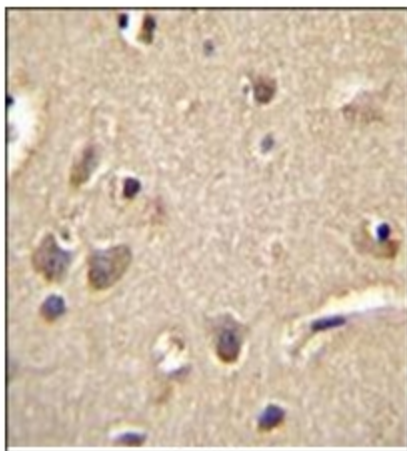
S100-A1, S100A, S100 alpha, S100 calcium-binding protein A1, S-100 protein subunit alpha, S-100 protein alpha chain

Note:

Molecular Weight: 10546 Da

Product images:

Western blot analysis in MDA-MB435 cell line lysates (35 ug/lane) using S100A1 Antibody (Center). This demonstrates the S100A1 antibody detected the S100A1 protein (arrow).



Immunohistochemistry analysis in Formalin Fixed, Paraffin Embedded Human brain tissue using S100A1 Antibody (C-term) followed by peroxidase conjugation of the secondary antibody and DAB staining. This data demonstrates the use of S100A1 Antibody (C-term) for immunohistochemistry. Clinical relevance has not been evaluated.