

## Product datasheet for **AP53775PU-N**

### **RYBP (N-term) Rabbit Polyclonal Antibody**

#### **Product data:**

<b>Product Type:</b>	Primary Antibodies
<b>Applications:</b>	WB
<b>Recommended Dilution:</b>	ELISA: 1/1,000. Western blotting: 1/100-1/500.
<b>Reactivity:</b>	Human
<b>Host:</b>	Rabbit
<b>Isotype:</b>	Ig
<b>Clonality:</b>	Polyclonal
<b>Immunogen:</b>	KLH conjugated synthetic peptide between 1-30 amino acids from the N-terminal region of Human RYBP (NP_036366.3)
<b>Specificity:</b>	Recognizes RYBP (N-term).
<b>Formulation:</b>	PBS with 0.09% (W/V) Sodium Azide as preservative State: Aff - Purified State: Liquid purified Ig fraction
<b>Concentration:</b>	lot specific
<b>Purification:</b>	Protein A column followed by peptide Affinity purification
<b>Conjugation:</b>	Unconjugated
<b>Storage:</b>	Store the antibody undiluted at 2-8°C for one month or (in aliquots) at -20°C for longer. Avoid repeated freezing and thawing.
<b>Stability:</b>	Shelf life: one year from despatch.
<b>Gene Name:</b>	RING1 and YY1 binding protein
<b>Database Link:</b>	<a href="#">Entrez Gene 23429 Human Q8N488</a>
<b>Background:</b>	RYBP may be implicated in the regulation of the transcription as a repressor of the transcriptional activity of E4TF1. In tumor cell lines, may induce apoptosis.
<b>Synonyms:</b>	RING1 and YY1-binding protein, DEDAF, YEAFF1, AAP-1, APAP-1, DED-associated factor, YY1 and E4TF1-associated factor 1

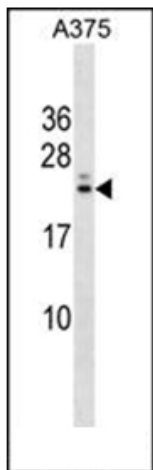


[View online »](#)

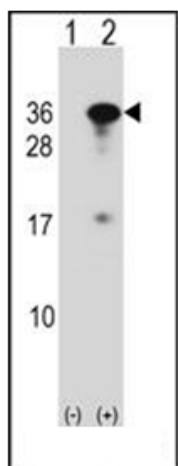
**Note:** **Molecular Weight:** 24822 Da

**Protein Families:** Druggable Genome, Transcription Factors

**Product images:**



Western blot analysis in A375 cell line lysates (35 ug/lane) using RYBP Antibody (N-term). This demonstrates the RYBP antibody detected the RYBP protein (arrow).



Western blot analysis of RYBP (arrow) using RYBP Antibody (N-term). 293 cell lysates (2 ug/lane) either nontransfected (Lane 1) or transiently transfected (Lane 2) with the RYBP gene.