

## Product datasheet for **AP53774PU-N**

### Retinoid X Receptor beta (RXRB) (Center) Rabbit Polyclonal Antibody

#### Product data:

Product Type:	Primary Antibodies
Applications:	WB
Recommended Dilution:	ELISA: 1/1,000. Western blotting: 1/100-1/500.
Reactivity:	Human
Host:	Rabbit
Isotype:	Ig
Clonality:	Polyclonal
Immunogen:	KLH conjugated synthetic peptide between 262~292 amino acids from the Central region of Human RXRB
Specificity:	Recognizes RXRB (Center).
Formulation:	PBS with 0.09% (W/V) Sodium Azide as preservative State: Aff - Purified State: Liquid purified Ig fraction
Concentration:	lot specific
Purification:	Protein A column followed by peptide Affinity purification
Conjugation:	Unconjugated
Storage:	Store the antibody undiluted at 2-8°C for one month or (in aliquots) at -20°C for longer. Avoid repeated freezing and thawing.
Stability:	Shelf life: one year from despatch.
Gene Name:	retinoid X receptor beta
Database Link:	<a href="#">Entrez Gene 6257 Human P28702</a>
Background:	This gene encodes a member of the retinoid X receptor (RXR) family of nuclear receptors which are involved in mediating the effects of retinoic acid (RA). This receptor forms homodimers with the retinoic acid, thyroid hormone, and vitamin D receptors, increasing both DNA binding and transcriptional function on their respective response elements. The gene lies within the major histocompatibility complex (MHC) class II region on chromosome 6.



[View online »](#)

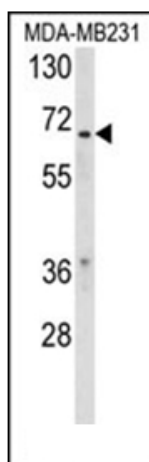
**Synonyms:** NR2B2, H-2RIIBP, Rcor-1, Retinoic acid receptor RXR-beta, Retinoid X receptor beta

**Note:** **Molecular Weight:** 56922 Da

**Protein Families:** Druggable Genome, Nuclear Hormone Receptor, Transcription Factors

**Protein Pathways:** Adipocytokine signaling pathway, Non-small cell lung cancer, Pathways in cancer, PPAR signaling pathway, Small cell lung cancer, Thyroid cancer

### Product images:



Western blot analysis of RXRB Antibody (Center) in MDA-MB231 cell line lysates (35 ug/lane). RXRB (arrow) was detected using the purified Pab.