

Product datasheet for **AP53772PU-N**

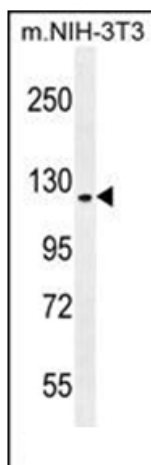
SGSM2 (C-term) Rabbit Polyclonal Antibody

Product data:

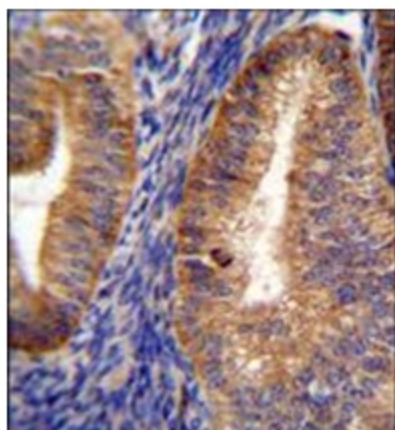
Product Type:	Primary Antibodies
Applications:	IHC, WB
Recommended Dilution:	ELISA: 1/1,000. Western blotting: 1/100-1/500. Immunohistochemistry: 1/50-1/100.
Reactivity:	Human, Mouse
Host:	Rabbit
Isotype:	Ig
Clonality:	Polyclonal
Immunogen:	KLH conjugated synthetic peptide between 962-992 amino acids from the C-terminal region of Human RUTBC1 (NP_001091979.1, NP_055668.2).
Specificity:	Recognizes RUTBC1 (C-term).
Formulation:	PBS with 0.09% (W/V) Sodium Azide as preservative State: Aff - Purified State: Liquid purified Ig fraction
Concentration:	lot specific
Purification:	Protein A column followed by peptide Affinity purification
Conjugation:	Unconjugated
Storage:	Store the antibody undiluted at 2-8°C for one month or (in aliquots) at -20°C for longer. Avoid repeated freezing and thawing.
Stability:	Shelf life: one year from despatch.
Gene Name:	small G protein signaling modulator 2
Database Link:	Entrez Gene 97761 Mouse Entrez Gene 9905 Human O43147
Synonyms:	KIAA0397, RUTBC1
Note:	Molecular Weight: 113285 Da



[View online »](#)

Product images:

Western blot analysis in mouse NIH-3T3 cell line lysates (35 ug/lane) using RUTBC1 Antibody (C-term). This demonstrates the RUTBC1 antibody detected the RUTBC1 protein (arrow).



Immunohistochemistry analysis in Formalin Fixed, Paraffin Embedded Human uterus tissue stained with RUTBC1 Antibody (C-term) followed by peroxidase conjugation of the secondary antibody and DAB staining. This data demonstrates the use of RUTBC1 Antibody (C-term) for immunohistochemistry. Clinical relevance has not been evaluated.