

Product datasheet for **AP53769PU-N**

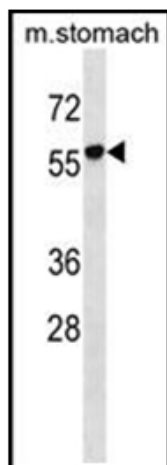
RUNDC1 (C-term) Rabbit Polyclonal Antibody

Product data:

Product Type:	Primary Antibodies
Applications:	WB
Recommended Dilution:	ELISA: 1/1,000. Western blotting: 1/100-1/500.
Reactivity:	Human, Mouse
Host:	Rabbit
Isotype:	Ig
Clonality:	Polyclonal
Immunogen:	KLH conjugated synthetic peptide between 508-537 amino acids from the C-terminal region of Human RUNDC1
Specificity:	Recognizes RUNDC1 (C-term).
Formulation:	PBS with 0.09% (W/V) Sodium Azide as preservative State: Aff - Purified State: Liquid purified Ig fraction
Concentration:	lot specific
Purification:	Protein A column followed by peptide Affinity purification
Conjugation:	Unconjugated
Storage:	Store the antibody undiluted at 2-8°C for one month or (in aliquots) at -20°C for longer. Avoid repeated freezing and thawing.
Stability:	Shelf life: one year from despatch.
Gene Name:	RUN domain containing 1
Database Link:	Entrez Gene 146923 Human Q96C34
Background:	RUNDC1 may play a role as p53/TP53 inhibitor and thus may have oncogenic activity.
Synonyms:	LP5161
Note:	Molecular Weight: 67643 Da



[View online »](#)

Product images:

Western blot analysis in mouse stomach tissue lysates (35 ug/lane) using RUNDC1 Antibody (C-term). This demonstrates the RUNDC1 antibody detected the RUNDC1 protein (arrow).