

Product datasheet for **AP53768PU-N**

RTP4 (C-term) Rabbit Polyclonal Antibody

Product data:

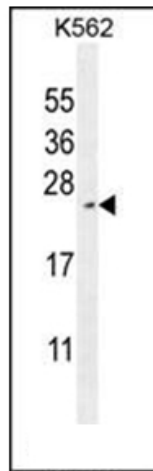
Product Type:	Primary Antibodies
Applications:	FC, WB
Recommended Dilution:	ELISA: 1/1,000. Western blotting: 1/100-1/500. Flow Cytometry: 1/10-1/50.
Reactivity:	Human
Host:	Rabbit
Isotype:	Ig
Clonality:	Polyclonal
Immunogen:	KLH conjugated synthetic peptide between 193-223 amino acids from the C-terminal region of Human RTP4
Specificity:	Recognizes RTP4 (C-term).
Formulation:	PBS with 0.09% (W/V) Sodium Azide as preservative State: Aff - Purified State: Liquid purified Ig fraction
Concentration:	lot specific
Purification:	Protein A column followed by peptide Affinity purification
Conjugation:	Unconjugated
Storage:	Store the antibody undiluted at 2-8°C for one month or (in aliquots) at -20°C for longer. Avoid repeated freezing and thawing.
Stability:	Shelf life: one year from despatch.
Gene Name:	receptor transporter protein 4
Database Link:	Entrez Gene 64108 Human Q96DX8
Background:	RTP4 belongs to the TMEM7 family. The function of this protein remains unknown.
Synonyms:	IFRG28, Receptor-transporting protein 4
Note:	Molecular Weight: 27863 Da



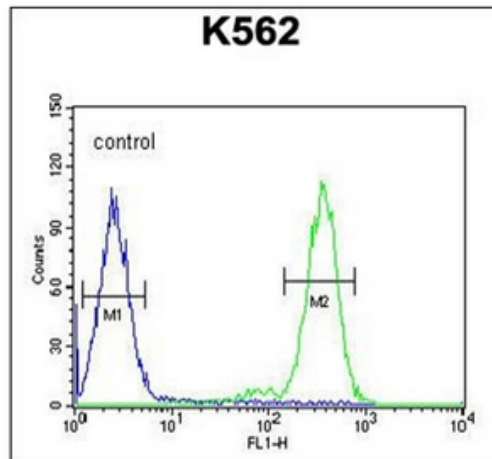
[View online »](#)

Protein Families: Druggable Genome

Product images:



Western blot analysis in K562 cell line lysates (35 ug/lane) using RTP4 Antibody (C-term). This demonstrates the RTP4 antibody detected the RTP4 protein (arrow).



Flow Cytometry analysis of K562 cells using RTP4 Antibody (C-term) (Right histogram) compared to a negative control cell (Left histogram). FITC-conjugated Goat-anti-Rabbit secondary antibodies were used for the analysis.