

Product datasheet for **AP53767PU-N**

RTP1 (C-term) Rabbit Polyclonal Antibody

Product data:

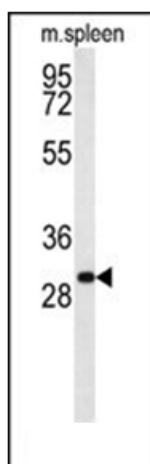
Product Type:	Primary Antibodies
Applications:	WB
Recommended Dilution:	Peptide ELISA: 1/1,000. Western blotting: 1/1,000.
Reactivity:	Human, Mouse
Host:	Rabbit
Isotype:	Ig
Clonality:	Polyclonal
Immunogen:	KLH conjugated synthetic peptide between 161-189 amino acids from the C-terminal region of Human RTP1
Specificity:	Recognizes RTP1 (C-term).
Formulation:	PBS with 0.09% (W/V) Sodium Azide as preservative State: Aff - Purified State: Liquid purified Ig fraction
Concentration:	lot specific
Purification:	Protein A column followed by peptide Affinity purification
Conjugation:	Unconjugated
Storage:	Store the antibody undiluted at 2-8°C for one month or (in aliquots) at -20°C for longer. Avoid repeated freezing and thawing.
Stability:	Shelf life: one year from despatch.
Gene Name:	receptor transporter protein 1
Database Link:	Entrez Gene 239766 Mouse Entrez Gene 132112 Human P59025
Background:	Specifically promotes functional cell surface expression of olfactory receptors, but not of other GPCRs (By similarity).
Synonyms:	Receptor-transporting protein 1
Note:	Molecular Weight: 30913 Da



[View online »](#)

Protein Families: Druggable Genome, Transmembrane

Product images:



Western blot analysis in mouse spleen tissue lysates (35 ug/lane) using RTP1 Antibody (C-term). This demonstrates the RTP1 antibody detected the RTP1 protein (arrow).